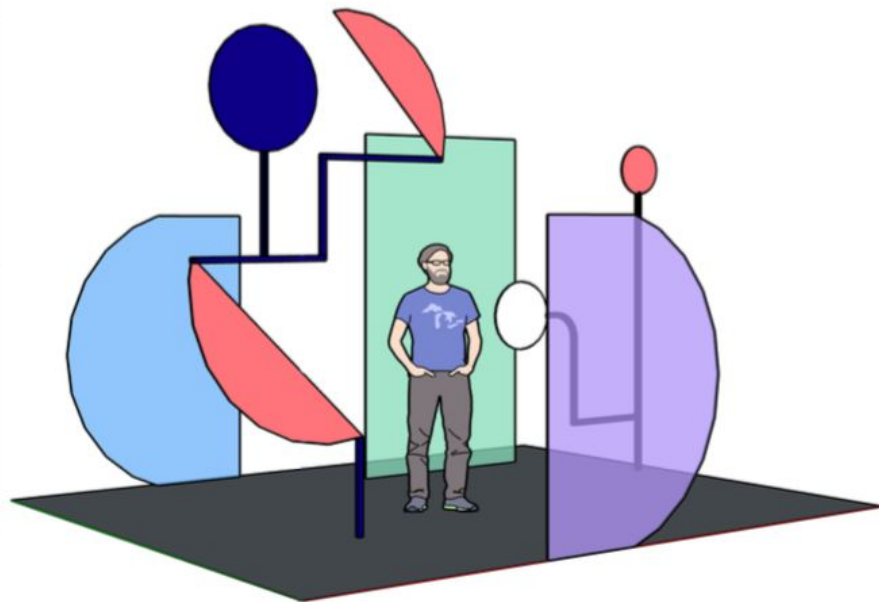
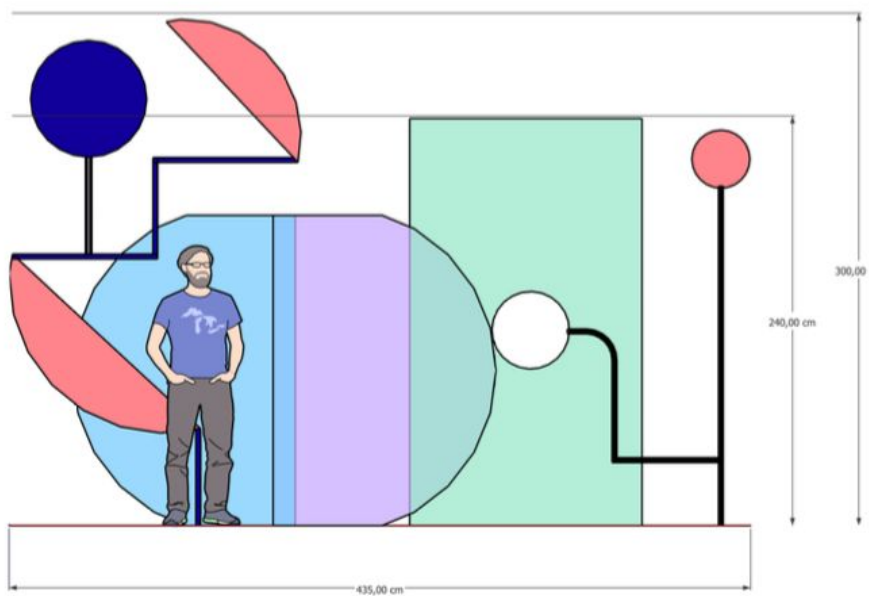


Sinta Tantra
CV/Portfolio 2022

Public Art Portfolio



'On Being Blue'
2022



'Sunset Ombre'
Mock up



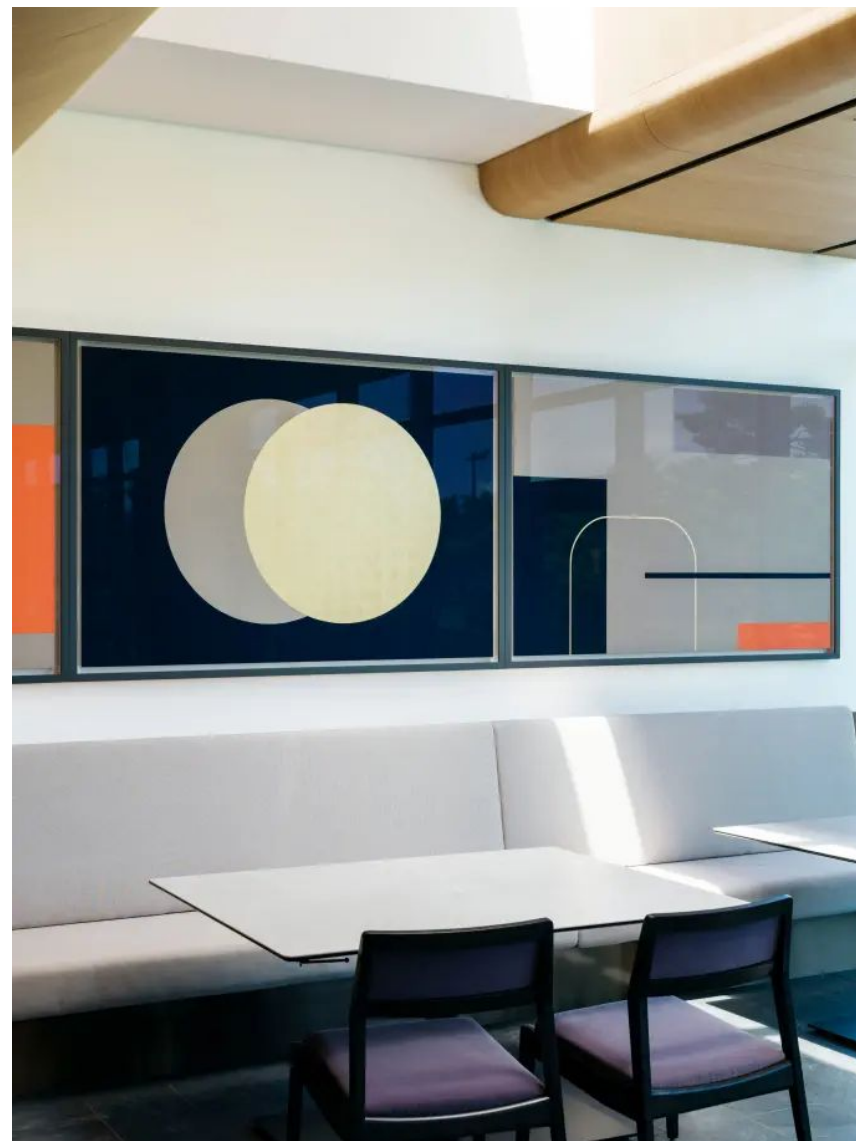
'Sunset Ombre'
On progress

A Cosmos – Pink, Blue Black and Gold, 2021

Accompanying her new installation "Pink Moon, Rising", Sinta Tantra has expanded motifs and elements from the mural to create a six-panel painting, "A Cosmos – Pink, Blue, Black and Gold" (2021).

Creating a dynamic sense of balance, Tantra presents a series of golden circles in a state of constant motion, as if the sun and moon were forming a perfect eclipse.

In Tantra's practice, the use of gold leaf symbolises our relationship to sublime beauty. The sense of time and space are lost within the painting, an absence of night, day, time and place. The tension of these elements creates a sense of new beginnings, possibilities, and renewal.





'A Cosmos – Pink, Blue, Black and Gold'
2021

Illuminated, 2021

South Korea

Situated outside the museum entrance, the floor-based artwork occupies the silhouette of a petal, inviting visitors to interact and step onto the piece itself.

Drawing inspiration from Tantra's own heritage and identity, Temple of Flora reimagines the physical and conceptual nature of islands. Tantra writes, "I'm interested in the tropical climate of Bali and Hainan, its biodiversity, its flora and fauna and how these ideas of otherness were documented, studied, and categorised in the Victorian era."

Temple of Flora presents a matrix of balance and rhythm, reminiscent of planetary constellations, puzzle or game. Tantra emphasises the importance of individual experiences and the connections they form between these fragmented images and forms to create new readings.





'Pink Moon, Rising'
South Korea, 2020

Temple of Flora, 2021

Ocean Flower Island Museum, China

Situated outside the museum entrance, the floor-based artwork occupies the silhouette of a petal, inviting visitors to interact and step onto the piece itself.

Drawing inspiration from Tantra's own heritage and identity, Temple of Flora reimagines the physical and conceptual nature of islands. Tantra writes, "I'm interested in the tropical climate of Bali and Hainan, its biodiversity, its flora and fauna and how these ideas of otherness were documented, studied, and categorised in the Victorian era."

Temple of Flora presents a matrix of balance and rhythm, reminiscent of planetary constellations, puzzle or game. Tantra emphasises the importance of individual experiences and the connections they form between these fragmented images and forms to create new readings.





'Temple of Flora'
Ocean Flower Island Museum, China

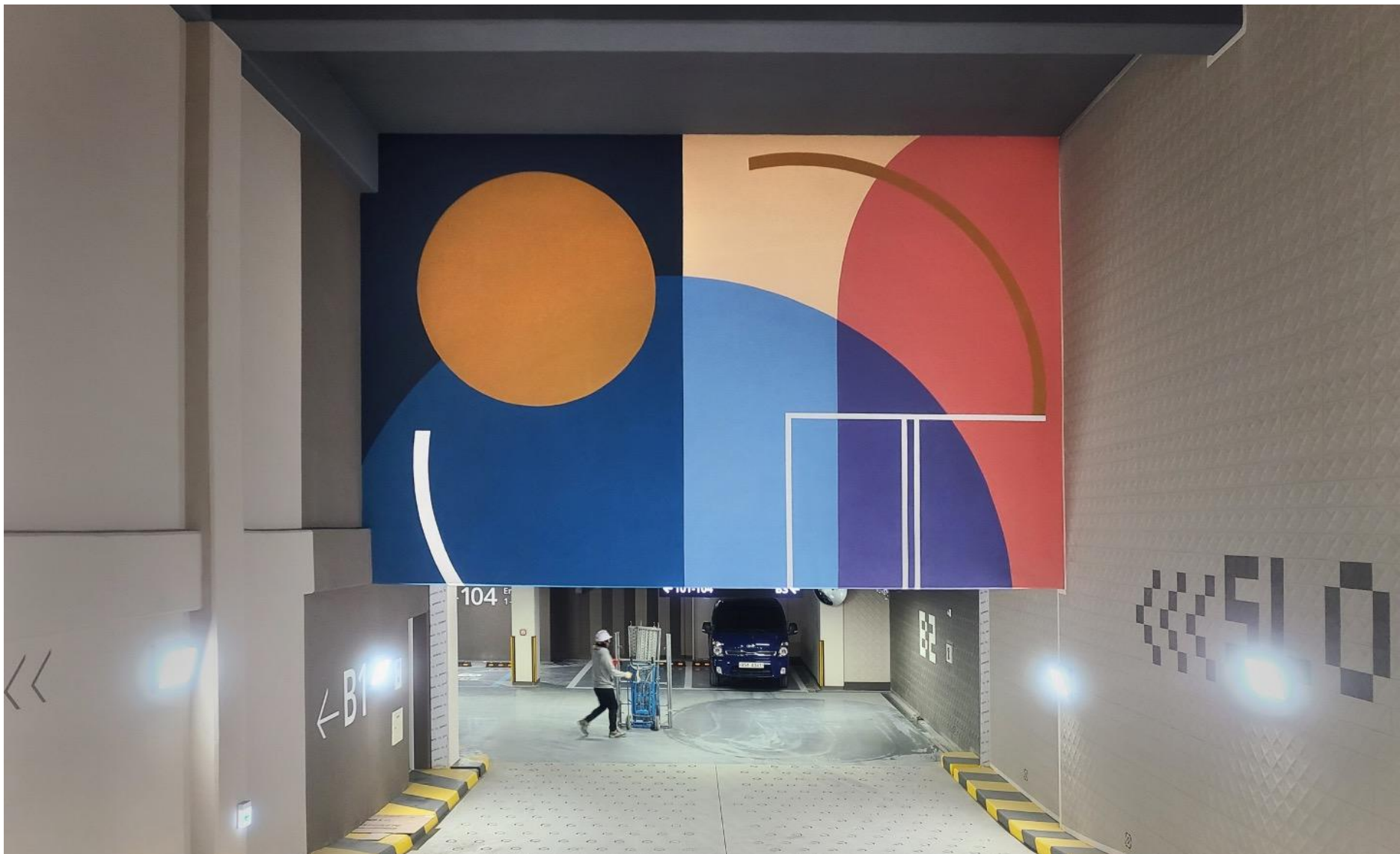
Crossing Mt Daemo, 2020

Gaepo District, South Korea

In response to H Forecent's luxurious residential complex, celebrated British artist, Sinta Tantra, has created a site-specific mural which spans the architecture and surrounding environment of the Gaepo District.

The work pushes and pulls between Tantra's signature colours including pink, green, blue with earth tones inspired by Korean heritage and the site of H Forecent, invoking the nearby trees, vegetation, and forests of Gangnam. Tantra hopes that this mural can inspire and protect the residents of Seoul for future generations to come and invite us to reconnect with our natural surroundings, the park and mountain.





'Crossing Mt. Daemo, Dawn'
Gaepo District, South Korea, 2020



'Crossing Mt. Daemo, Wall'
Gaepo District, South Korea, 2020

The Grand Tour 2020

Dulwich Picture Gallery, London

Dulwich Picture Gallery presents *The Grand Tour* (2020) a new commission and site-specific installation by London based British/Balinese artist Sinta Tantra. The work, which pays homage to the Gallery's original architect, Sir John Soane, as well as its historic collection, forms part of a fully redesigned welcome hall by Tantra, who has opened up this vital entrance space with colour, shape and light.





'The Grand Tour'
Dulwich Picture Gallery, London



Poin Square
Jakarta, 2020

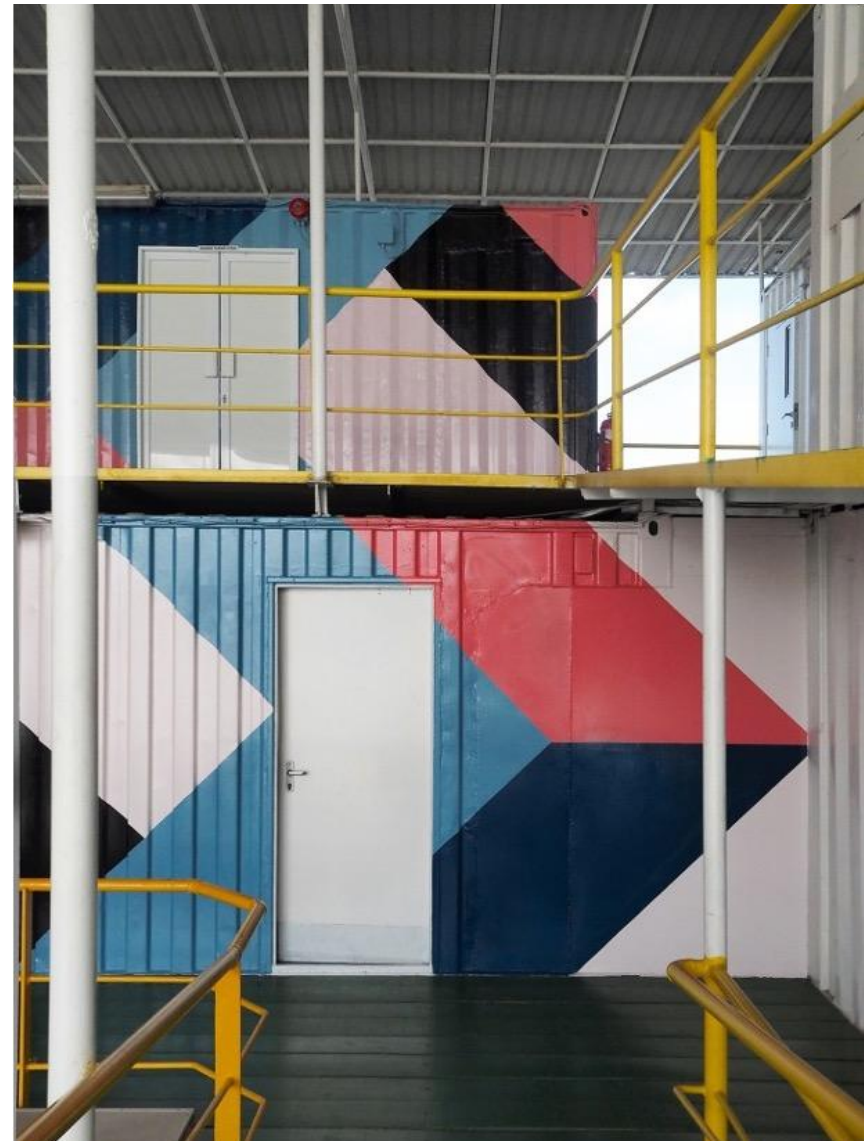


Poin Square
Jakarta, 2020

Razzle Dazzle, Dr. Share, 2020

Floating Hospital, Indonesia

The Dazzle design concept was adopted by the UK Admiralty Marine Affairs then later by the United States Navy to make the ships a difficult target to the enemy. Razzle Dazzle, is made up of colors that symbolize the distinction of the ship's location. Blue symbolizing waves and water, while bright pink the equatorial climates the boat will pass through. Diagonal lines, mirrored rectangular shapes form a spatial void distorting the perception of the viewer while keeping a restorative sense of balance and symmetry. This unique design created by Sinta Tantra for doctorSHARE creates an uplifting focal point for the hospital's entrance.



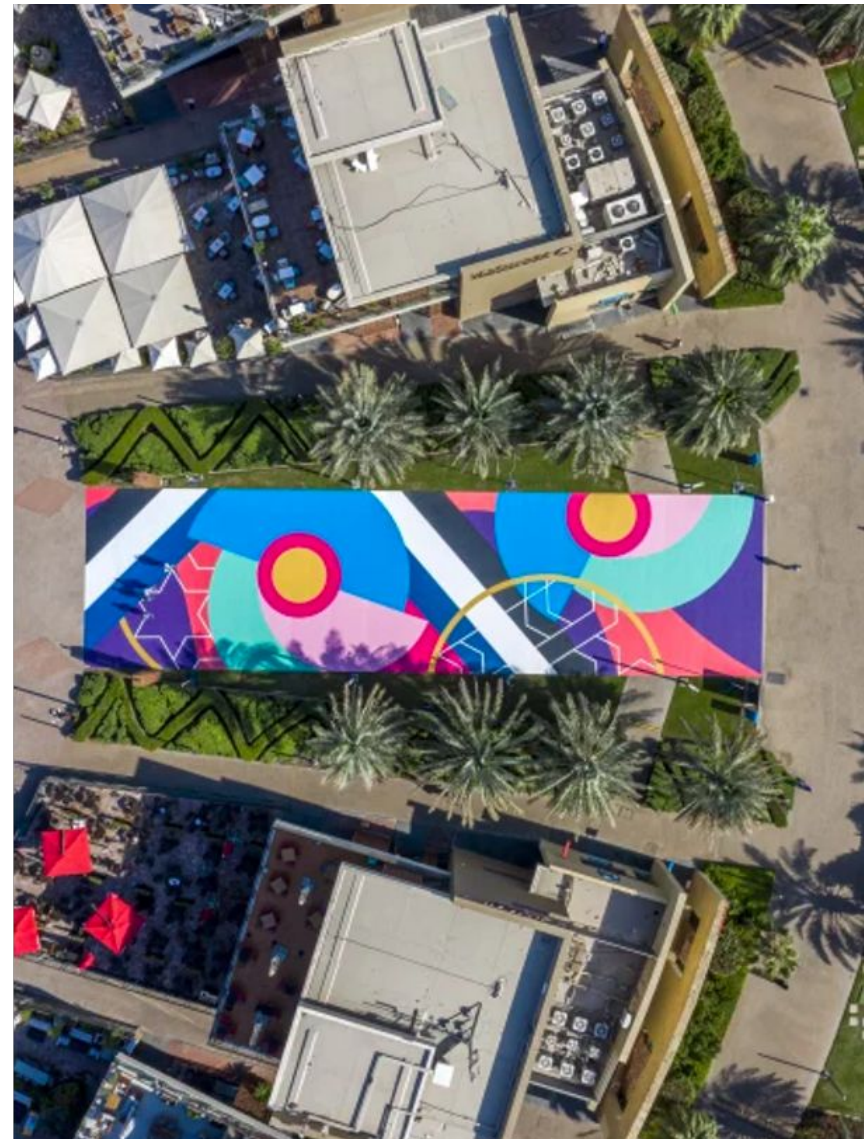


Razzle Dazzle, Dr Share 2020
Dr. Share Floating Hospital, Indonesia

Horizon to Horizon, 2020

Al Majaz Waterfront, Sharjah UAE

This year's 22nd festival will be held under the theme of 'Prospect'. With over 50 exhibitions on show throughout the emirate, including the Sharjah Art Museum, Al Majaz Waterfront, and Maraya Art Centre, presenting the works of local, regional and international artists.





'Horizon to Horizon'
Al Majaz Waterfront, Sharjah UAE, 2020

Flight Interrupted: Eco-leaks from the Invasion Desk, 2019

*KARACHI BIENNALE Bin Al Qasim Park,
Karachi*

‘Flight Interrupted: Eco-leaks from the Invasion Desk’ underscores the annihilation inflicted on eco-systems by man’s war of ambition with nature, and the myriad detrimental reactions from nature. The thematic of KB19 will take the on-going conversations a notch higher to match the urgency of the onslaught on natural habitats and natural resources. This extremity must be treated as an impetus, to cause a reaction, a comment, an alternative to a civilized, established model. An archetype that is considered by a great diversity of stakeholders as a system in crisis.





'Flight Interrupted: Eco-leaks from the Invasion Desk'
KARACHI BIENNALE Bin Al Qasim Park, Karachi, 2019

In the Mood for Love, 2018

Lee Tung Avenue, Hong Kong

Located on Lee Tung Avenue, *In the Mood for Love* is a public art commission for Hong Kong's Art Month. Working beyond the traditional walls of the gallery space, this large-scale immersive work encourages passersby to look, relook and step inside: "Circular shapes makes one feel uplifted, solid bright colours become pleasing and life-affirming." In this work, Tantra welcomes audiences to participate in a 'living painting'.



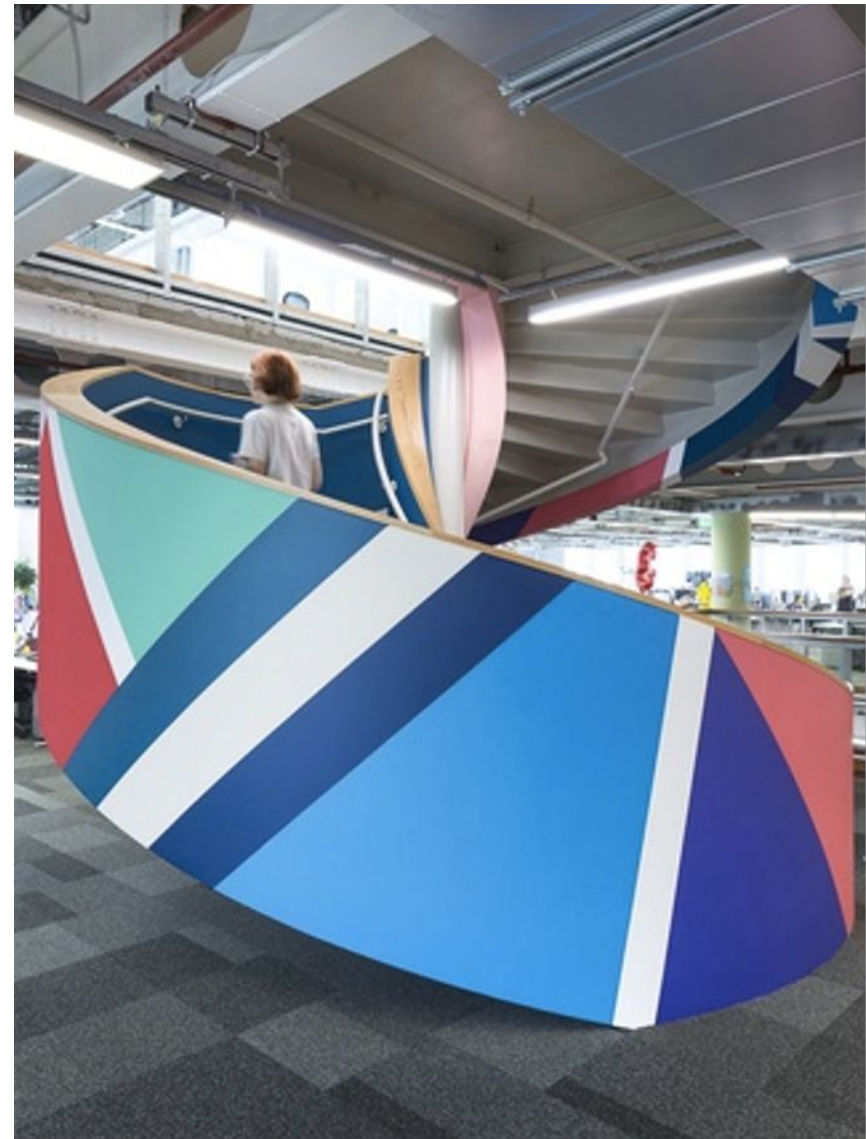


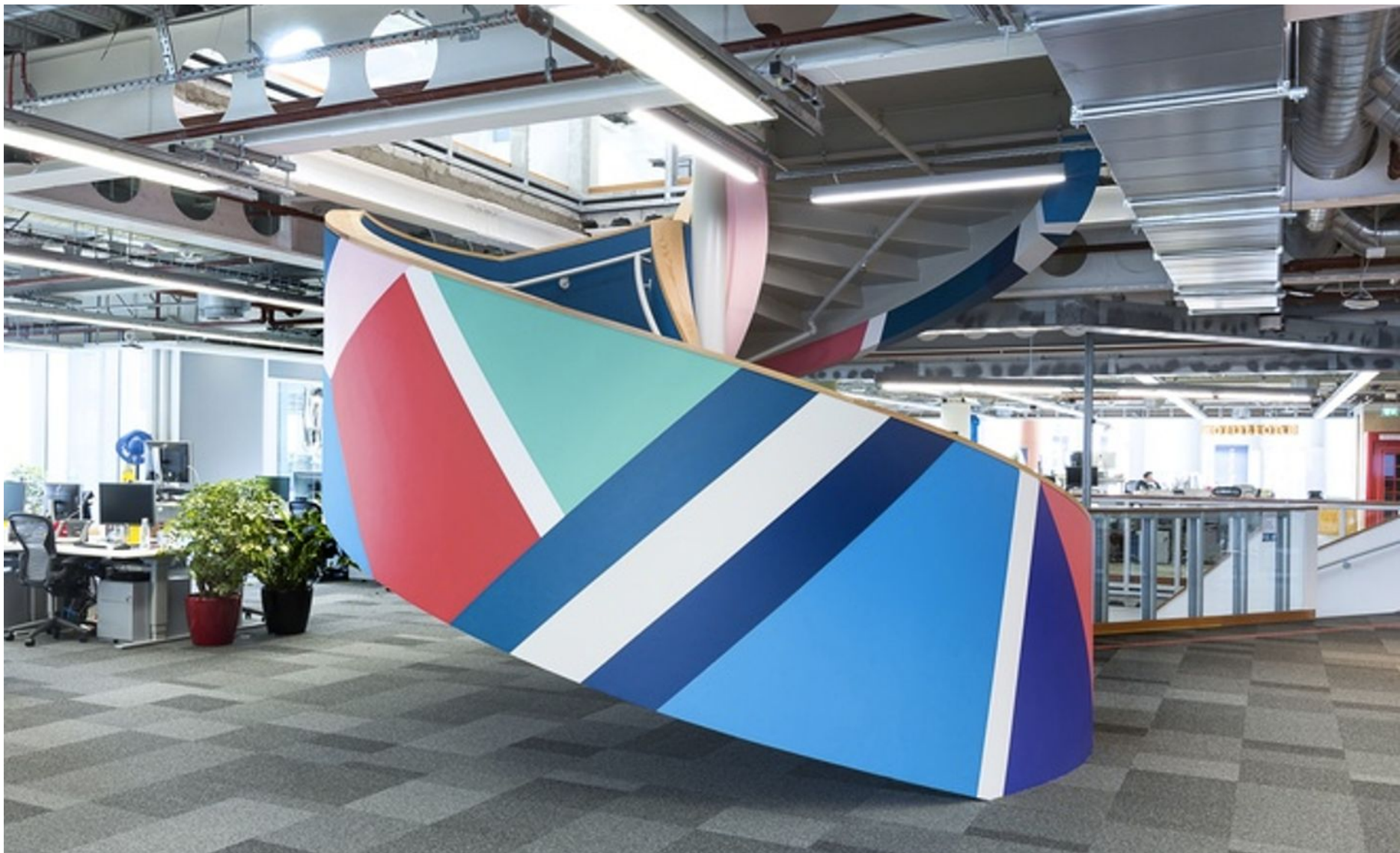
'In The Mood for Love'
Lee Tung Avenue, Hong Kong
2018

***Sunset at Tanah Lot (8.6212°
S, 115.0868°E), 2018***

Facebook building, London,

As part of the Facebook AIR programme, *Sunset at Tanah Lot* reframes this spiral staircase both as a sculptural object in its own right, and as a symbolic place of passage and interaction. The colour palette of this piece is inspired by sunset hues at Tanah Lot beach, Bali: purples and blues of nightfall, and at the centre of the design, a single orange triangle to represent the setting sun.





**'SUNSET AT TANAH LOT (8.6212° S, 115.0868° E),
FACEBOOK LONDON', 2018**

Winner design for *Palio* *Di Siena's* 2017

'Drappelone' (winner flag), Siena

Each summer since the 17th century, the medieval center at the Tuscan city of Siena is taken over by the Palio Di Siena, a horse race event. The horses and riders each represent a city district and the winner is awarded a flag called 'drappelone', which is traditionally designed by a different artist each year. This year Tantra had the great honor to be the chosen artist. Her bold geometric designs and bright colors matched perfectly the aesthetics of the event, and she was wildly celebrated all over the local media.





PALIO, SIENA, 2017

1947, 2017

The Cube building, Folkestone Triennial,
Kent

Tantra's aim was 'to make the building fizz' by transforming the surfaces of its rather immobile volume. The colors she used were inspired by a poster from 1947 advertising rail travel to Folkestone. The work of artist Sonia Delaunay inspired the circle with flowing and broken lines of color. This eclectic mixture of references fits Kent's Tontine Street, a neighborhood rich with migrants from all over the world.

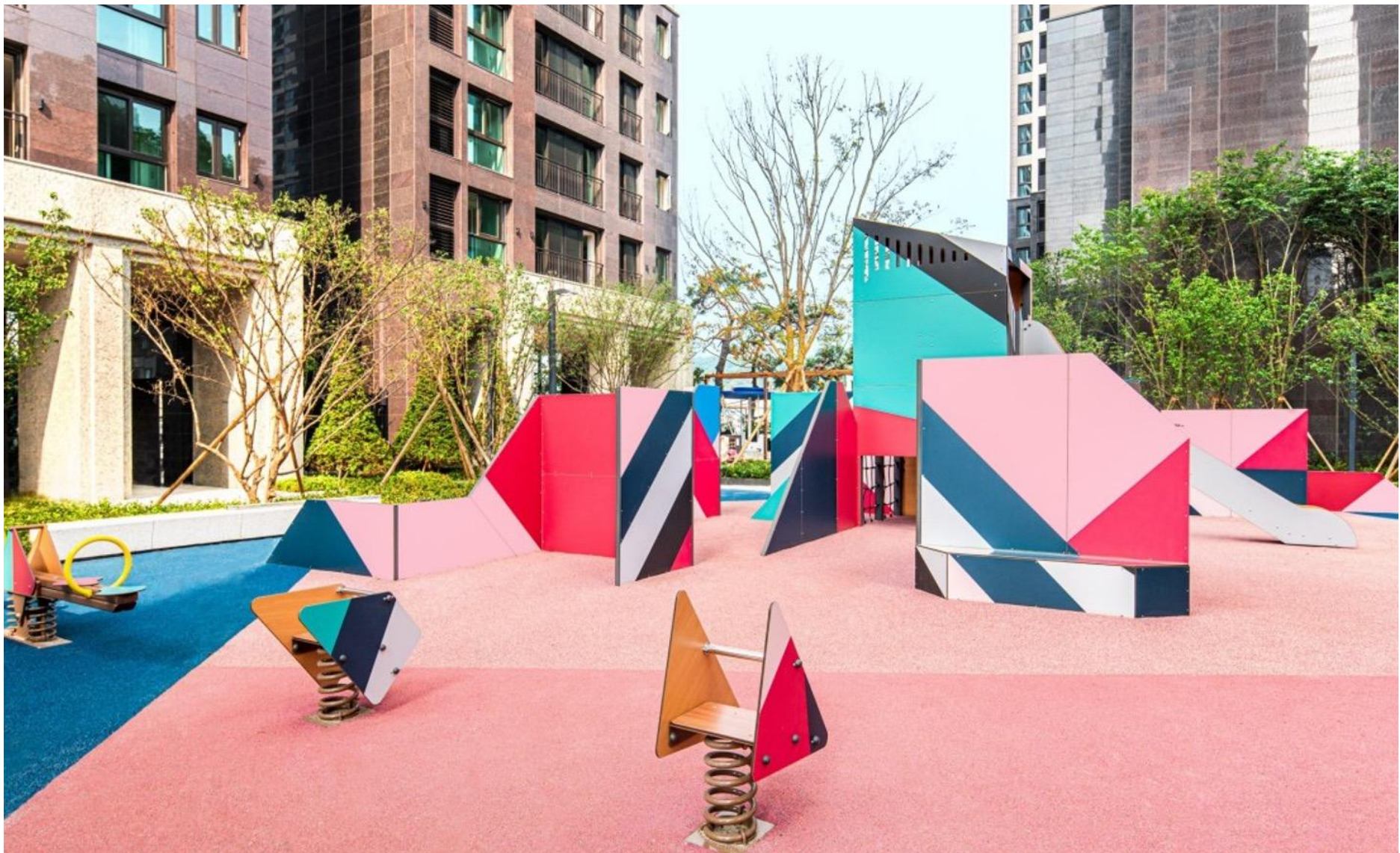




1947
The Cube building, Folkestone Triennial, Kent, 2017



Rooftop Painting
Hana Bank, South Korea 2017

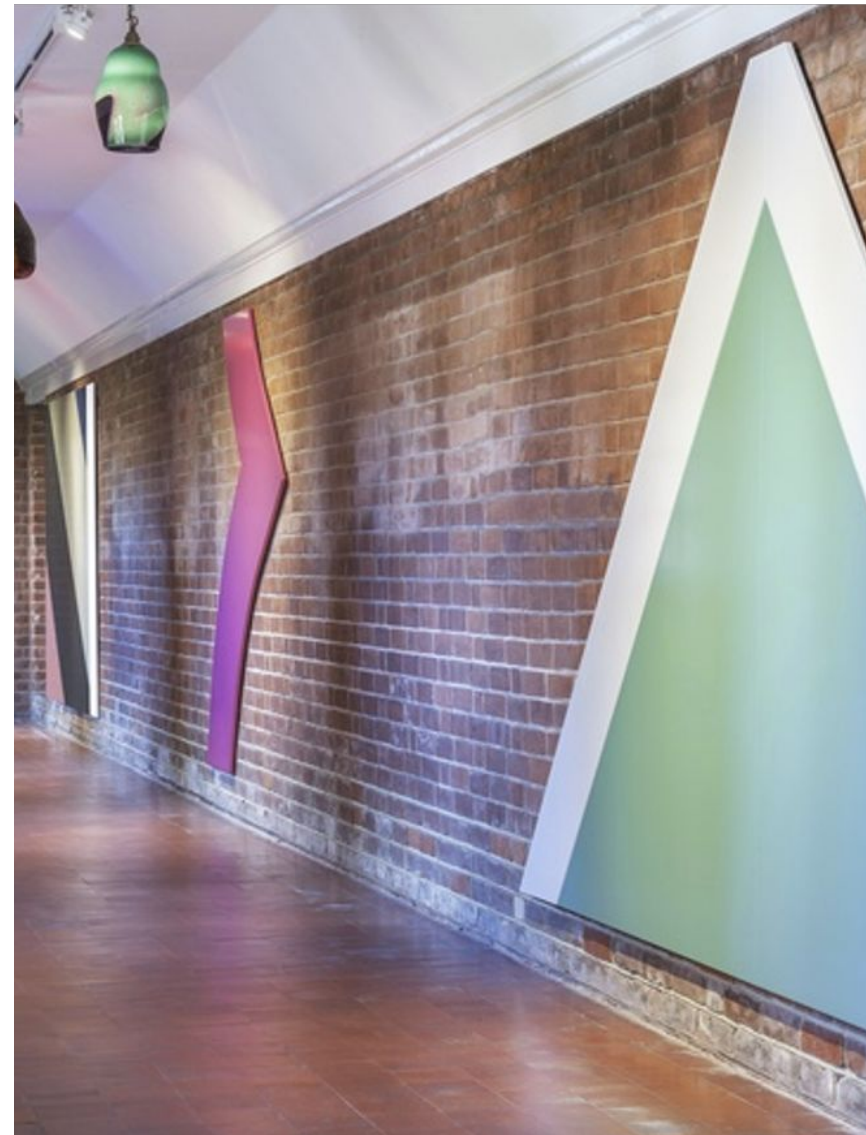


'Tasted Flight'
Playground, Seoul, South Korea, 2017

A Means of Liberation, 2016

Newnham College, Cambridge University

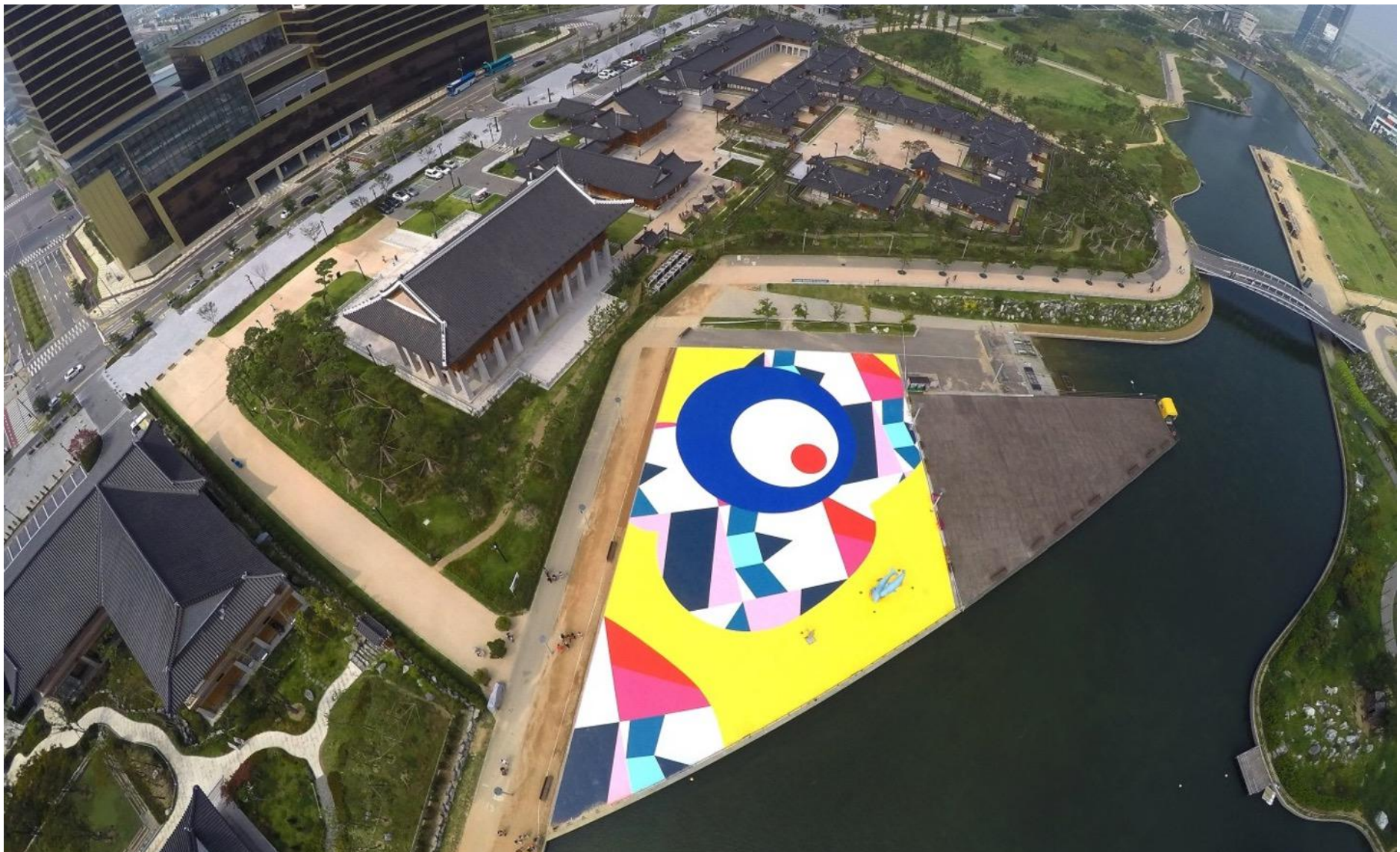
Cambridge University's Newnham College commissioned Sinta Tantra to create an artwork and lighting scheme in one of its historic corridors. Established in 1871, Newnham College is the only undergraduate college with an all-women Fellowship. Colored geometric motifs adorn the inner walls whilst a series of hand-blown glass pendants suspend from the ceiling. The result is an artwork that becomes immersive and activated as people walk through. By incorporating the original brickwork into the installation, Tantra looks at spaces in between, layering the past with the present.



SONGDO FLOOR PAINTING

Hailed as the 'City of the Future' and considered as 'Korea's High tech Utopia' - the city of Songdo has commissioned artist Sinta Tantra to create a spectacular floor painting as part of its major public art programme with Korean and International artists. British artists include Richards Woods and Designer Abe Rogers. Located by the waterfront, the artwork measures over 3,300 metres square.





Floor Painting,
City of Songdo, South Korea, 2015

A Beautiful Sunset Mistaken for a Dawn, 2012

Canary Wharf, London

This impressive artwork, a 300-metre long abstract panoramic painting, is featured on both sides of the 150-metre long Bridge at Canary Wharf, London. Tantra's inspiration for the painting emerged through observations of the natural elements and the different ways people interact with the place. She recorded a 24-hour time-lapse sequence showing the sunset and sunrise over the bridge. The color palette echoes this study: blues and greys that work well during daytime and purples and pinks for the night.



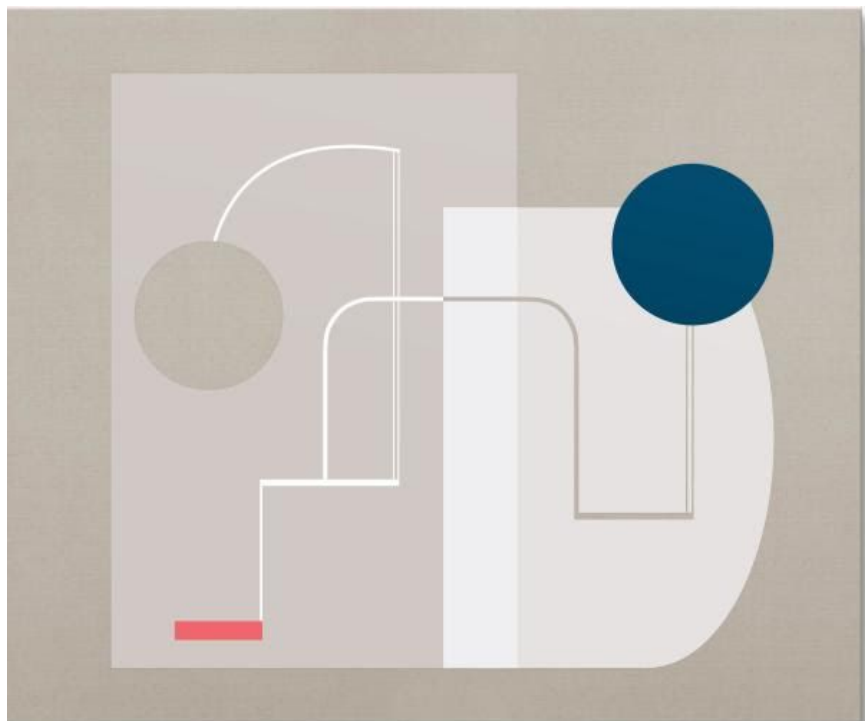


***A Beautiful Sunset Mistaken for a Dawn,
Canary Wharf, London, 2012***

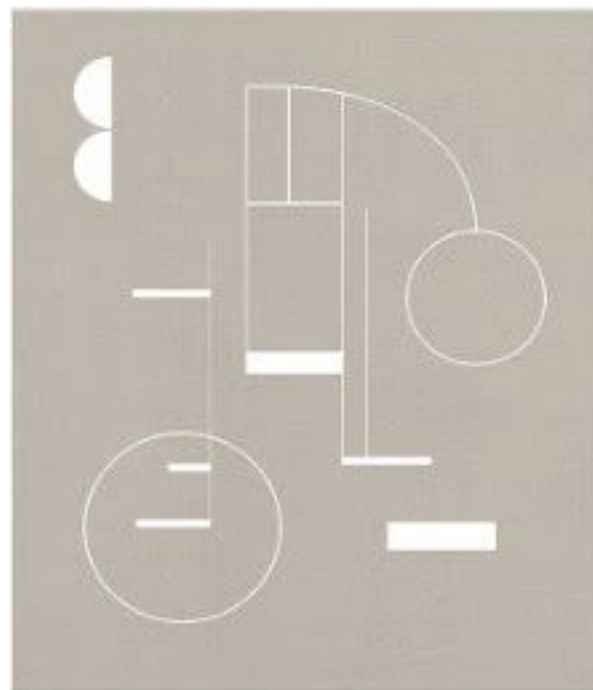
Available Works 2019



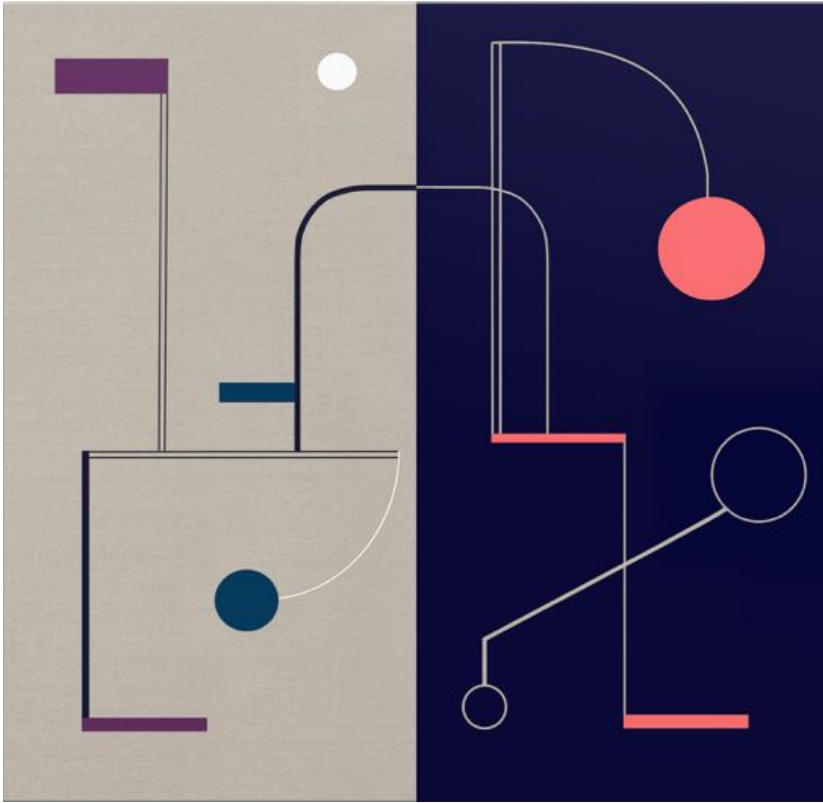
Follow Constellations and Star Paths
(Buckminster Fuller), 2019
40 x 40 x 40cm
Acrylic and Brass



Mist, 2019
180 x 150 cm
Tempera on Linen



Giapponese a Roma in Linen, 2018
120 x 100 cm
Tempera on Linen

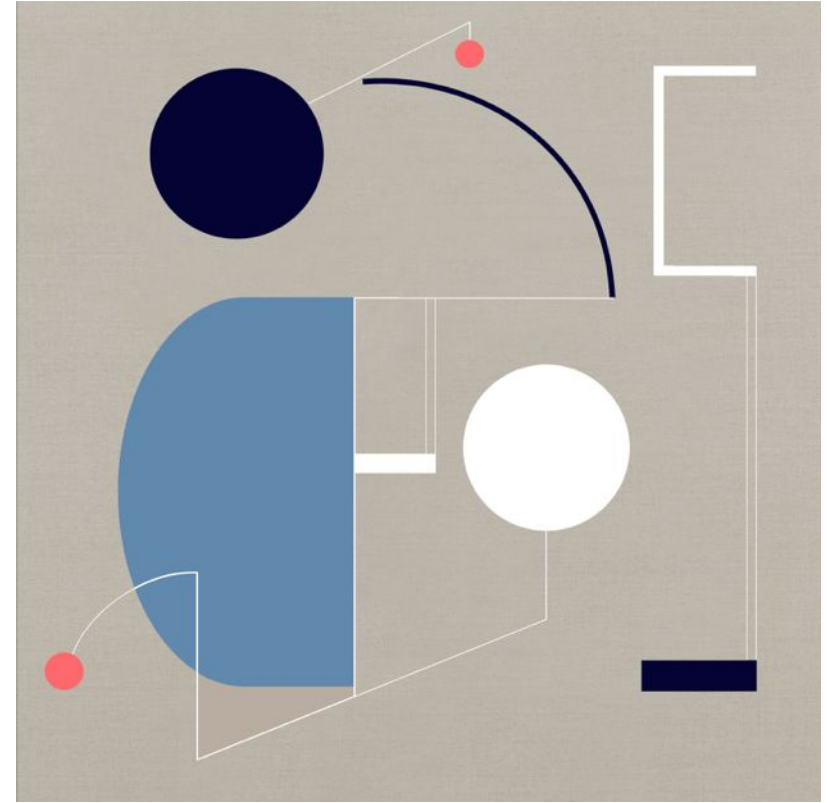


Star Clock at Night (Buckminster Fuller),

2019

180 x 180cm

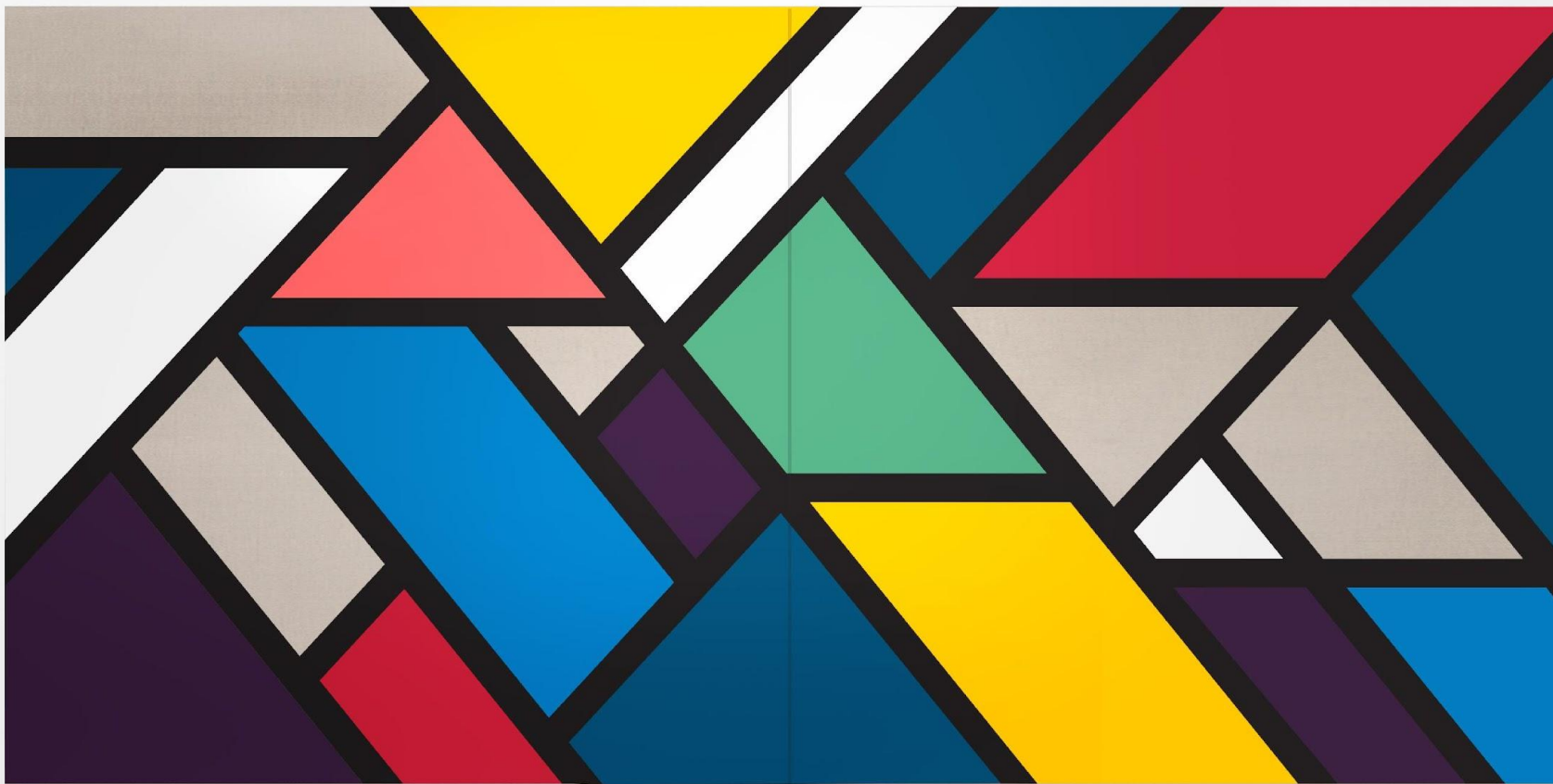
Tempera on Linen



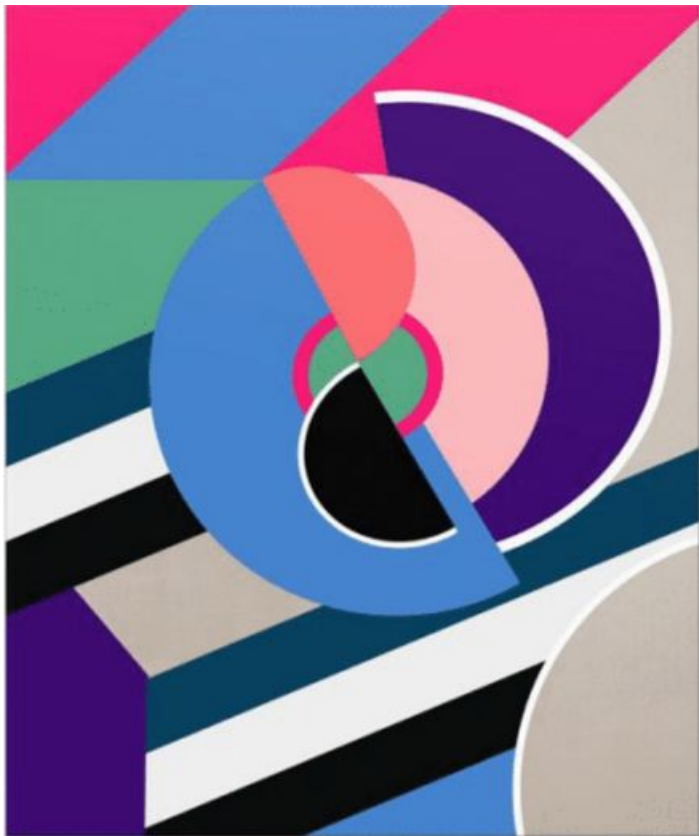
Sun Clock in Day III, 2019

180 x 180cm

Tempera on Linen



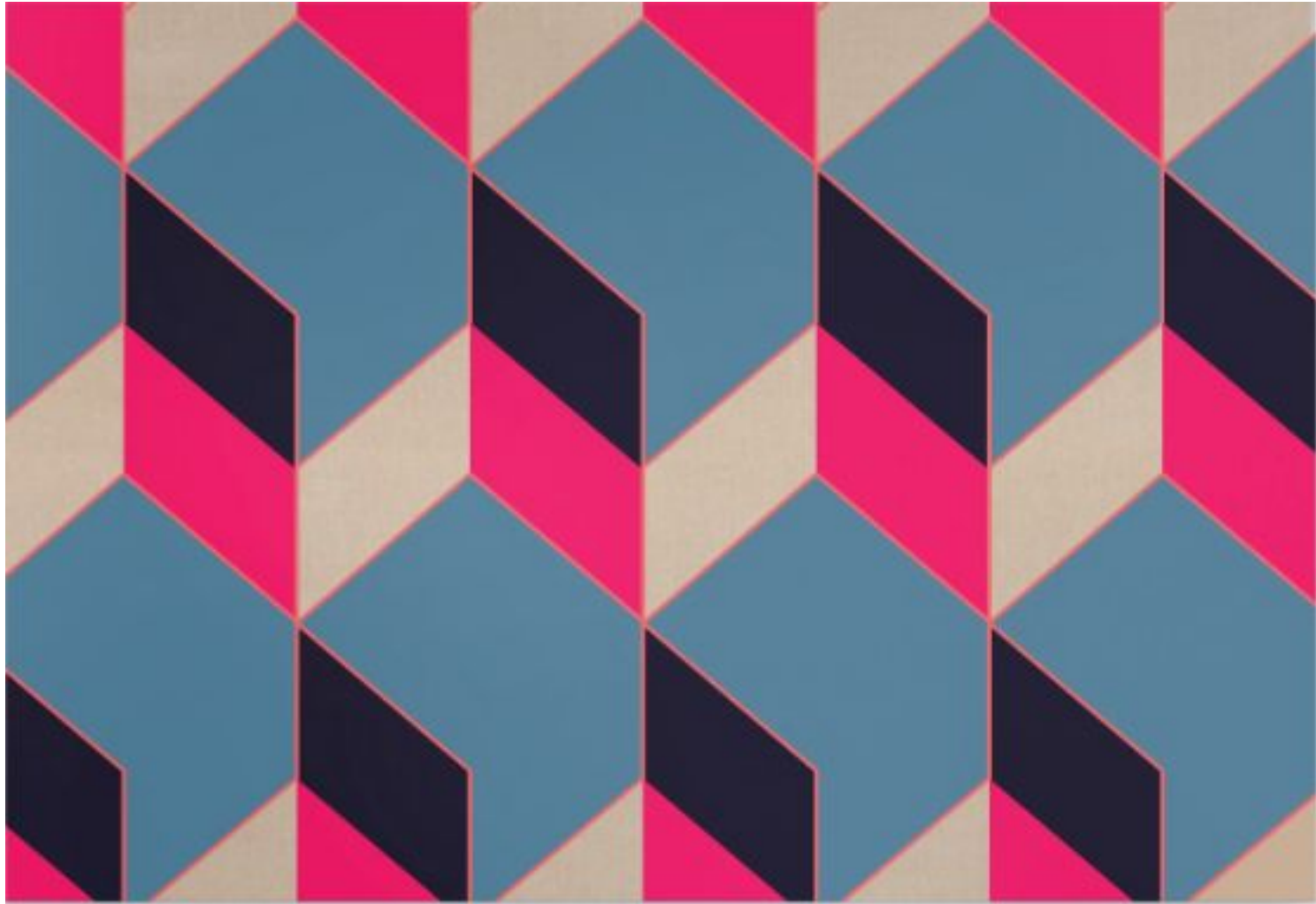
A House in Bali I (Diptych), 2018
180 x 360cm
Tempera on Linen



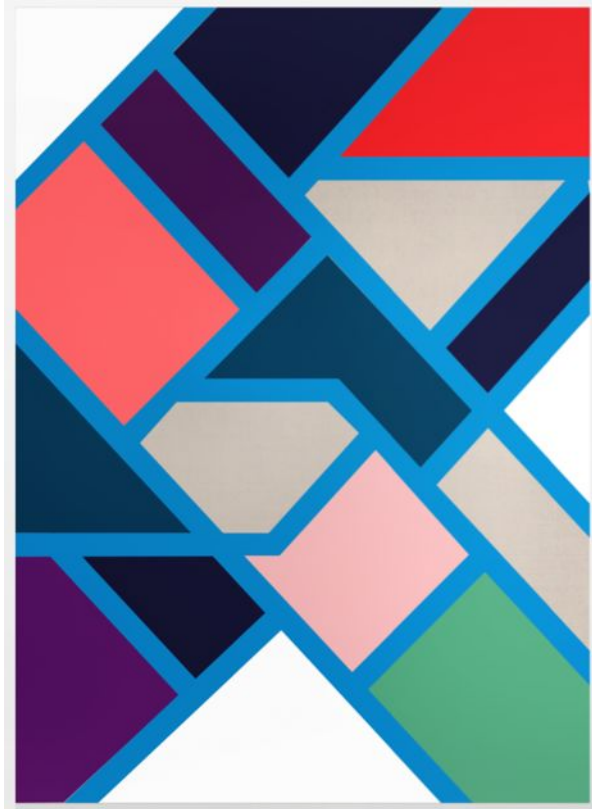
***A House in Bali II (Day – Sauna
Delaunay), 2018***
120 x 100cm
Tempera on Linen



A Love Making Begins You I, 2017
150 x 150cm
Tempera on Linen



Always Be Fond in Pink (Oscar Wilde), 2016
180 x 127cm
Tempera on Linen



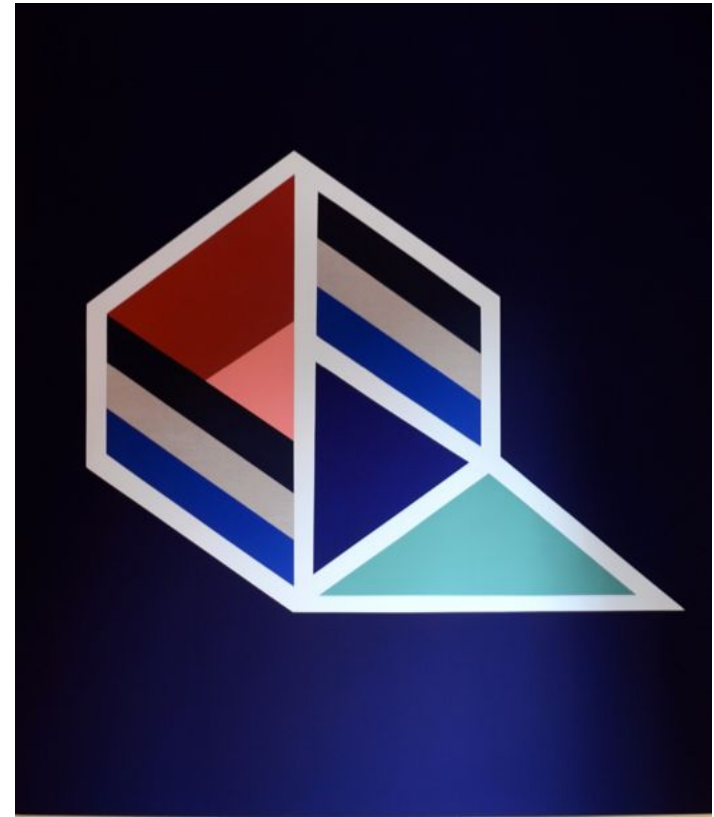
***Tuca Tuca a Springtime Evening in
Rome, 2017***
180 x 130cm
Tempera on Linen



***Tuca Tuca a Springtime Evening
in Rome II, 2017***
100 x 100cm
Tempera on Linen



Effervascene in Pink, 2014
200 x 150 cm
Tempera on Canvas



Effervascene in Hague, 3, 2015
154 x 180 cm
Tempera on Linen

About

A British artist of Balinese descent, Sinta Tantra was born in New York in 1979. Known for her fascination with colour and composition, Tantra's work is an experiment in scale and dimension, a hybridity of pop and formalism, an exploration of identity and aesthetics. Her decade of work in the public realm produced distinct colour abstractions which wrapped around the built environment, enlivening and transforming them in the process. Her work now ranges from small painted canvases to huge architectural installations, from bold, tropical colour to a calder-like minimalism. It occupies a space at the intersection between painting and architecture, striking a fine balance between the two-dimensional and three-dimensional, decorative and functional, public and private. Themes within Tantra's practice include the slippage between pictorial and physical space, of turning something 'inside out', and how we as bodies become submerged in surface and structure.





"I describe the work as 'painting on an architectural scale'.

I create works that celebrate the spectacle, questioning the decorative, functional and social role of art. The compositional arrangements are rooted in formalism. I am intrigued when this formalism becomes 'relational' - when private becomes public and when the viewer becomes active. My work is an 'overlay' which inserts its identity within the pre-existing - heightening a sense of fantasy within the functional."

One of Tantra's most notable works includes a permanent landmark commission for Canary Wharf completed for the Olympics in 2012 – a 300-metre long painted bridge stretching over the water in the heart of London's business district. Other commissions in public spaces include; Royal British Society of Sculptors (2013); Liverpool Biennial (2012); Southbank Centre (2007) and Transport for London (2006).

Tantra's work can be found in the collections of the UK's Government Art Collection as well as numerous private international collections.

The Sound of Colours, St Paul's Way Medical Centre, London, 2017

ISA Art Gallery

RECENT GROUP EXHIBITIONS

- 2022 Convocation, Art Moments 2022, Jakarta, Indonesia
Throughline, ISA Art and Design, Jakarta, Indonesia
art KARLSRUHE Art fair, Kristin Hjellegjerde Gallery, Germany
Titik Kumpul, ISA Art and Design, Jakarta, Indonesia
Reverberation, ISA Art and Design, Jakarta, Indonesia
- 2021 Facing the Sun, Kristin Hjellegjerde Gallery, Schloss Görne, Berlin, Germany
- 2020 On the Nature of Botanical Gardens, Framer Framed, Amsterdam
- 2019 Strangers in Town, Kristin Hjellegjerde Gallery, Berlin
- 2018, *Sinta Tantra & Haffendi Anuar*, Richard Koh Gallery, Kuala Lumpur
Hornby Tantra, Collaborative Works III, Broadgate, London
Tetap Terang / Always Bright, ISA, Jakarta
Voyage to Indonesia, The World Bank, Washington DC
- 2017 *Empirical Atlas*, Pearl Lam Gallery, Singapore
Acts of Transgression, Pearl Lam Gallery, Singapore
High Noon, Accademia Belle Arti di Roma, Rome
Summer Mostra, The British School at Rome, Rome

SOLO EXHIBITIONS

- 2023 Sinta Tantra at ART SG, Kristin Hjellegjerde , Singapore
2022 Constellations of Being, ISA Art and Design, Jakarta, Indonesia
On Being Blue, Kristin Hjellegjerde Gallery, Nevlunghavn, Norway
- 2021 Birds of Paradise, Kristin Hjellegjerde Gallery, Berlin, Germany
- 2020 Modern Times, Kristin Hjellegjerde Gallery, London.
- 2018 *Your Private Sky*, Kristin Hjellegjerde Gallery, London
- 2017 *A House in Bali*, ISA Gallery, Jakarta
- 2016 *A Romance of Many Dimensions*, Pearl Lam Gallery, Hong Kong
- 2015 *Fantastic / Chromatic*, Kristin Hjellegjerde Gallery, London
Essence of a Thing, House of St. Barnabas, London
Nick Hornby & Sinta Tantra, Choi and Lager Gallery, Cologne
- 2011 *Dynamic, Maximum, Tension*, Liverpool Biennial, Liverpool
- 2010 *Politics of Seduction*, Stanley Picker Gallery, Kingston University, London
Arsenic Fantasy, Gaya Fusion Gallery, Bali
- 2009 *Real Phoney*, Monika Bobinska Gallery, London

RECENT GROUP EXHIBITIONS

2017 *Identify Your Limitations, Acknowledge your Periphery*, Vitrine

Gallery, Basel

Changing Perspective, Jogja National Museum,

Yogyakarta

Quotidian, Pearl Lam Gallery, Shanghai

I Lost my Heart to a Spaceship Trooper, Griffin Gallery,

London

Spring Mostra, The British School at Rome, Rome

2016 *Lost and Found: Place, Space and Identity*, World Trade

Centre, Jakarta

Painting Now, Riccardo Crespi Gallery, Milan

PUBLIC ART COMISSIONS

2022 Sunset Ombre, One Satrio, Mega Kuningan, Jakarta
2021 Pink Moon Rising, Seolhaewon, Gangwon-Do
2021 Temple of Flora, Ocean Flower Island, Hainan
2021 Illuminated, 22 Bishopsgate, London commissioned by Contemporary Art Society
2020 The Grand Tour, Dulwich Picture Gallery, London
2020 Crossing Mount Daemo, The H Honor Hills, Seoul commissioned by Hyundai
2020 Pains Square, Jakarta
2019 Horizon to Horizon, Sharjah Islamic Arts Festival, Sharjah
2019 Bright Dawn, Karachi Biennale, Karachi
2019 Compose Motions, Honer Hills, commissioned by Hyundai, Seoul
2019 Tasted Flight, Honer Hills, commissioned by Hyundai, Seoul
2018 Sunset in Tanah Lot, Facebook, London
2018 In the Mood for Love, Lee Tung Avenue, Hong Kong
2018 Paintworks, commissioned by Crest Nicholson, Bristol
2017 1947, commissioned by Folkestone Triennial, Folkestone
2017 Pailo Drappallone, commissioned by Commune di Siena, Siena
2017 Diamond Minutes, commissioned by Hana Bank, Incheon, Korea
2017 The Sound of Colour, commissioned by St. Paul's Way Medical Centre, London
2016 A Means of Liberation, commissioned by Newnham College, Cambridge
2015 Songdo, commissioned by the South Korean Government, Songdo
2015 Sensory Garden, commissioned by Bristol Royal Infirmary Hospital, Bristol
2015 The Eccentricity of Zero, commissioned by Royal British Society Sculptors, London
2015 Greater Reality of Elsewhere, commissioned by Locwus International, Swansea
2013 The Eccentricity of Zero, commissioned by Royal British Sculptor Society, Holland Park, London
2012 Together Yet Forever Apart, commissioned by Liverpool Biennial, Liverpool
2012 A Beautiful Sunset Mistaken For a Dawn, commissioned by Canary Wharf, London
2008 A Good Time and a Half!, commissioned by The Southbank Centre, London
2007 Neon Tetra, commissioned by CreateKX for Camley Street Natural Park, London
2007 Isokon Dreams, commissioned by London Borough of Camden, Regents Park Bridge, London
2007 Line Up, commissioned by Platform for Art, Piccadilly Tube Station, London
2006 Party Surprise, commissioned by Christchurch University, Canterbury
2006 Emporia, commissioned by London Fashion Week's On|Off, 6 Burlington Gardens, London

Jl. Wijaya Timur Raya No. 12

Jakarta, 12170, Indonesia

enquiries: enquiries@isaartadvisory.com

phone : (6221) 723-3905

www.isaartadvisory.com

ISA Art
Gallery