



**ISA** Art  
Gallery

Sinta Tantra

## Sinta Tantra



Sinta Tantra, a British artist of Balinese heritage, was born in New York in 1979. Her work is well-known for its interest in color and composition, as well as for its experimentation with scale and dimension. Tantra's art is a combination of pop and formalism, exploring themes of identity and aesthetics. Over the course of a decade, she produced unique color abstractions in public spaces that wrapped around structures and transformed them. Her current work spans from small painted canvases to large-scale architectural installations, ranging from bold tropical colors to minimalism reminiscent of Calder's work. Tantra's art occupies a space that balances between painting and architecture, balancing between two-dimensional and three-dimensional forms, decorative and functional elements, and public and private spaces. Her practice explores themes such as the relationship between pictorial and physical space, the process of turning something inside out, and how our bodies become submerged in surface and structure.

"I describe the work as 'painting on an architectural scale. I create works that celebrate the spectacle, questioning the decorative, functional and social role of art. The compositional arrangements are rooted in formalism. I am intrigued when this formalism becomes 'relational' - when private becomes public and when the viewer becomes active. My work is an 'overlay' which inserts its identity within the pre-existing - heightening a sense of fantasy within the functional."

One of Tantra's most notable works includes a permanent landmark commission for Canary Wharf completed for the Olympics in 2012 – a 300-metre long painted bridge stretching over the water in the heart of London's business district. Other commissions in public spaces include; Royal British Society of Sculptors (2013); Liverpool Biennial (2012); Southbank Centre (2007) and Transport for London (2006). Tantra's work can be found in the collections of the UK's Government Art Collection as well as numerous private international collections.

## SOLO EXHIBITIONS

- 2023 Sinta Tantra at ART SG, Kristin Hjellegjerde , Singapore  
Solo Show, Richard Koh Gallery, Bangkok
- 2022 Constellations of Being, ISA Art and Design, Jakarta, Indonesia  
On Being Blue, Kristin Hjellegjerde Gallery, Nevlunghavn, Norway
- 2021 Birds of Paradise, Kristin Hjellegjerde Gallery, Berlin, Germany
- 2020 Modern Times, Kristin Hjellegjerde Gallery, London.
- 2018 *Your Private Sky*, Kristin Hjellegjerde Gallery, London
- 2017 *A House in Bali*, ISA Gallery, Jakarta
- 2016 *A Romance of Many Dimensions*, Pearl Lam Gallery, Hong Kong
- 2015 *Fantastic / Chromatic*, Kristin Hjellegjerde Gallery, London  
*Essence of a Thing*, House of St. Barnabas, London  
*Nick Hornby & Sinta Tantra*, Choi and Lager Gallery, Cologne
- 2011 *Dynamic, Maximum, Tension*, Liverpool Biennial, Liverpool
- 2010 *Politics of Seduction*, Stanley Picker Gallery, Kingston University, London  
*Arsenic Fantasy*, Gaya Fusion Gallery, Bali
- 2009 *Real Phoney*, Monika Bobinska Gallery, London

## GROUP EXHIBITIONS

- 2023 Taru Bingin, ISA Art Gallery 2023, Jakarta, Indonesia  
Sua Kuasa Matra, ISA Art Gallery 2023, Jakarta, Indonesia  
Art Jakarta Garden, ISA Art Gallery, Jakarta, Indonesia
- 2022 Light in Retrospective, ISA Art Gallery 2022, Jakarta, Indonesia  
Convocation, Art Moments 2022, Jakarta, Indonesia  
Throughline, ISA Art and Design, Jakarta, Indonesia  
art KARLSRUHE Art fair, Kristin Hjellegjerde Gallery, Germany  
Uprising, Kristin Hjellegjerde Gallery, Schloss Gorne, Berlin  
Titik Kumpul, ISA Art and Design, Jakarta, Indonesia  
Reverberation, ISA Art and Design, Jakarta, Indonesia  
A New Paradise, Saatchi Gallery, London  
Small is Beautiful; 40<sup>th</sup> Edition, Flowers Gallery, London
- 2021 Facing the Sun, Kristin Hjellegjerde Gallery, Schloss Görne, Berlin, Germany
- 2020 On the Nature of Botanical Gardens, Framer Framed, Amsterdam
- 2019 Strangers in Town, Kristin Hjellegjerde Gallery, Berlin  
Woven & Illuminated, Kristin Hjellegjerde Gallery, Berlin  
Y: Collect 3.0, Ruci Art Space, Jakarta  
Reinventing Eve, ISA Gallery, Jakarta
- 2018 *Sinta Tantra & Haffendi Anuar*, Richard Koh Gallery, Kuala Lumpur  
*Hornby Tantra, Collaborative Works III*, Broadgate, London  
*Tetap Terang / Always Bright*, ISA, Jakarta  
*Voyage to Indonesia*, The World Bank, Washington DC
- 2017 *Empirical Atlas*, Pearl Lam Gallery, Singapore  
*Acts of Transgression*, Pearl Lam Gallery, Singapore  
*High Noon*, Accademia Belle Arti di Roma, Rome  
*Summer Mostra*, The British School at Rome, Rome  
*Identify Your Limitations, Acknowledge your Periphery*, Vitrine Gallery, Basel

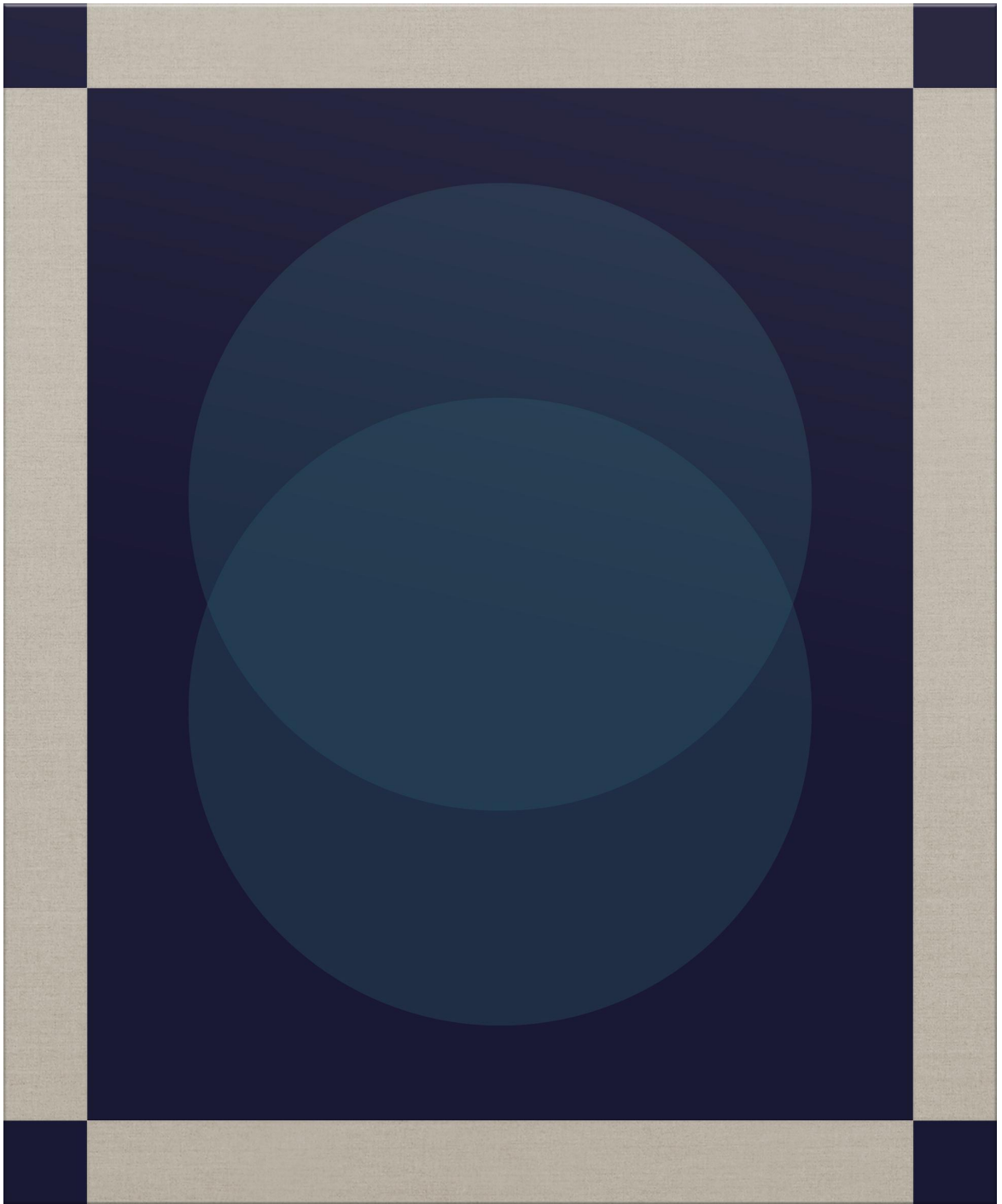
## PUBLIC ART COMISSIONS

- 2022 Sunset Ombre, One Satrio, Mega Kuningan, Jakarta
- 2021 Pink Moon Rising, Seolhaewon, Gangwon-Do  
Temple of Flora, Ocean Flower Island, Hainan  
Illuminated, 22 Bishopsgate, London commissioned by Contemporary Art Society
- 2020 The Grand Tour, Dulwich Picture Gallery, London  
Crossing Mount Daemo, The H Honor Hills, Seoul commissioned by Hyundai  
Poins Square, Jakarta
- 2019 Horizon to Horizon, Sharjah Islamic Arts Festival, Sharjah  
Bright Dawn, Karachi Biennale, Karachi  
Compose Motions, Honer Hills, commissioned by Hyundai, Seoul  
Tasted Flight, Honer Hills, commissioned by Hyundai, Seoul
- 2018 Sunset in Tanah Lot, Facebook, London  
In the Mood for Love, Lee Tung Avenue, Hong Kong  
Paintworks, commissioned by Crest Nicholson, Bristol
- 2017 1947, commissioned by Folkestone Triennial, Folkestone  
Pailo Drappallone, commissioned by Commune di Siena, Siena  
Diamond Minutes, commissioned by Hana Bank, Incheon, Korea  
The Sound of Colour, commissioned by St. Paul's Way Medical Centre, London
- 2016 A Means of Liberation, commissioned by Newnham College, Cambridge
- 2015 Songdo, commissioned by the South Korean Government, Songdo  
Sensory Garden, commissioned by Bristol Royal Infirmary Hospital, Bristol  
The Eccentricity of Zero, commissioned by Royal British Society Sculptors,  
London  
Greater Reality of Elsewhere, commissioned by Locwus International, Swansea
- 2013 The Eccentricity of Zero, commissioned by Royal British Sculptor Society, Holland Park, London
- 2012 Together Yet Forever Apart, commissioned by Liverpool Biennial, Liverpool  
A Beautiful Sunset Mistaken For a Dawn, commissioned by Canary Wharf,  
London
- 2008 A Good Time and a Half!, commissioned by The Southbank Centre, London
- 2007 Neon Tetra, commissioned by CreateKX for Camley Street Natural Park, London  
Isokon Dreams, commissioned by London Borough of Camden, Regents Park Bridge, London  
Line Up, commissioned by Platform for Art, Piccadilly Tube Station, London
- 2006 Party Surprise, commissioned by Christchurch University, Canterbury  
Emporia, commissioned by London Fashion Week's On | Off, 6 Burlington Gardens, London



## *Solo Presentation at ARTSG*

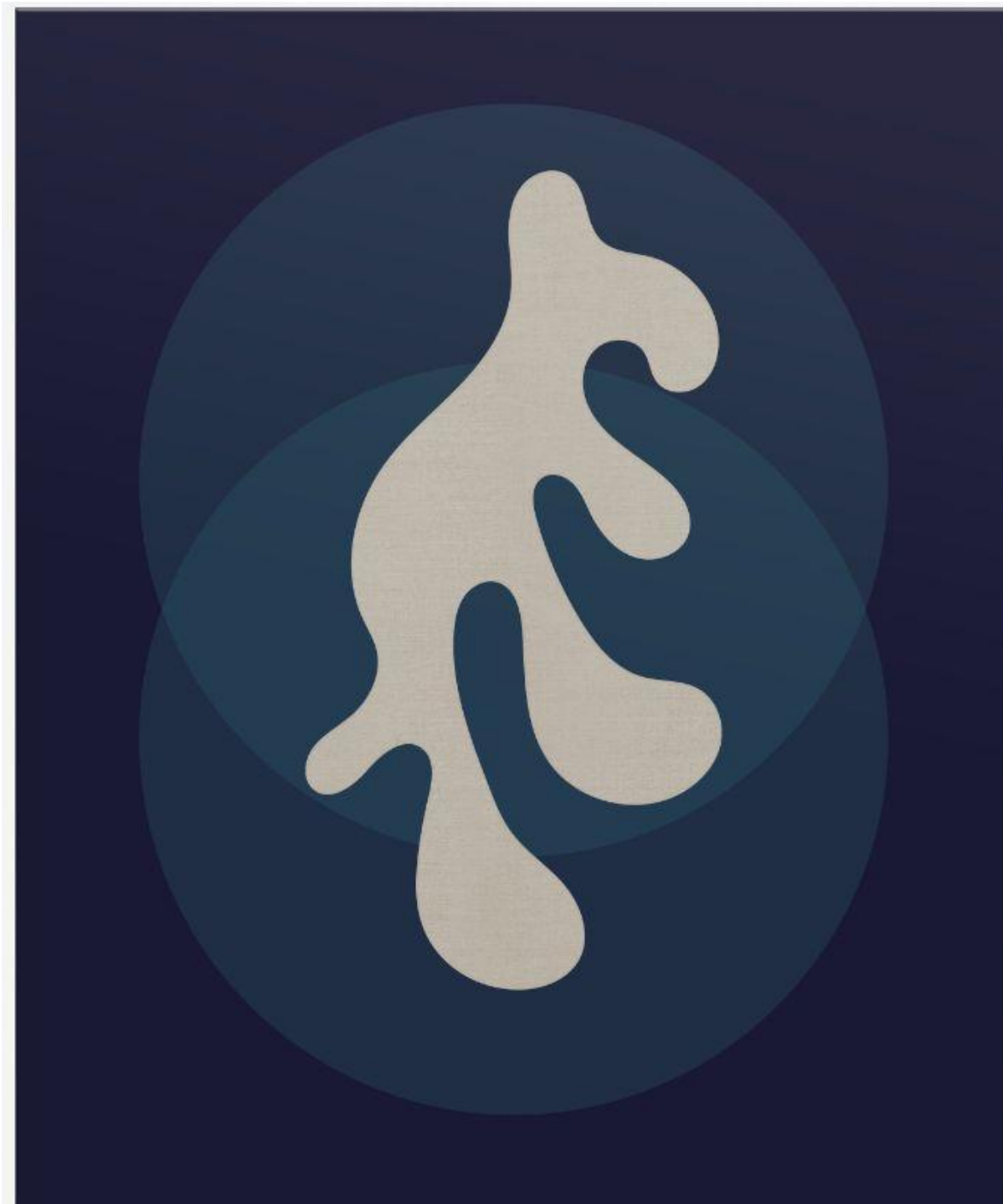
Kristin Hjellegjerde Gallery, 1 of 6 Best Booths by ARTSY



Tilem  
2023  
Tempera and gold on linen  
100 x 80 cm



Purnama  
2023  
Tempera on linen  
100 x 80 cm



Taman Ujung (A Water Palace)  
2023  
Tempera on linen  
160 x 130 cm





Myna Bird. II  
2023  
Tempera and 24 ct gold leaf on linen  
120 x 100 cm



2016 – 2019 works

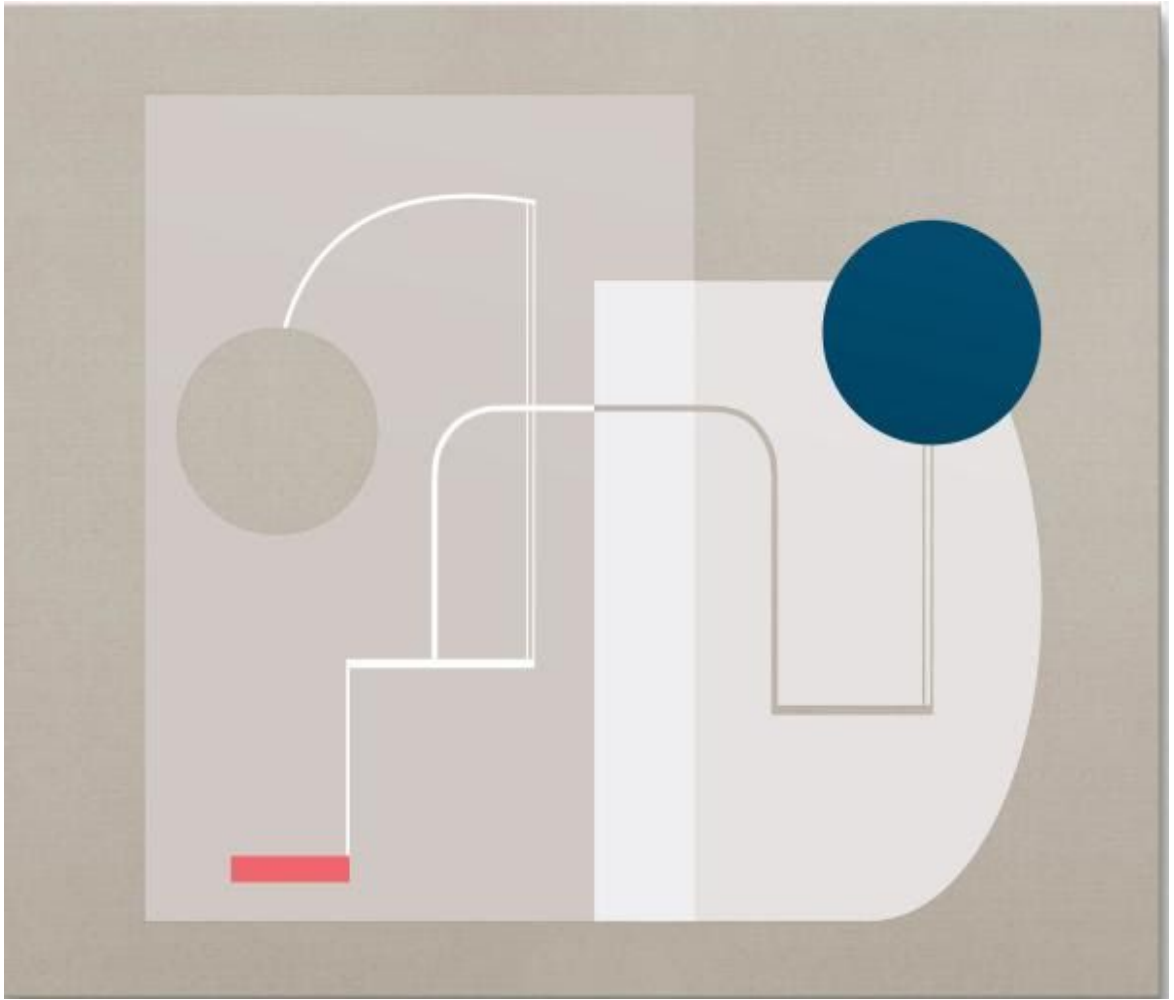


Follow Constellations and Star Paths (Buckminster Fuller)

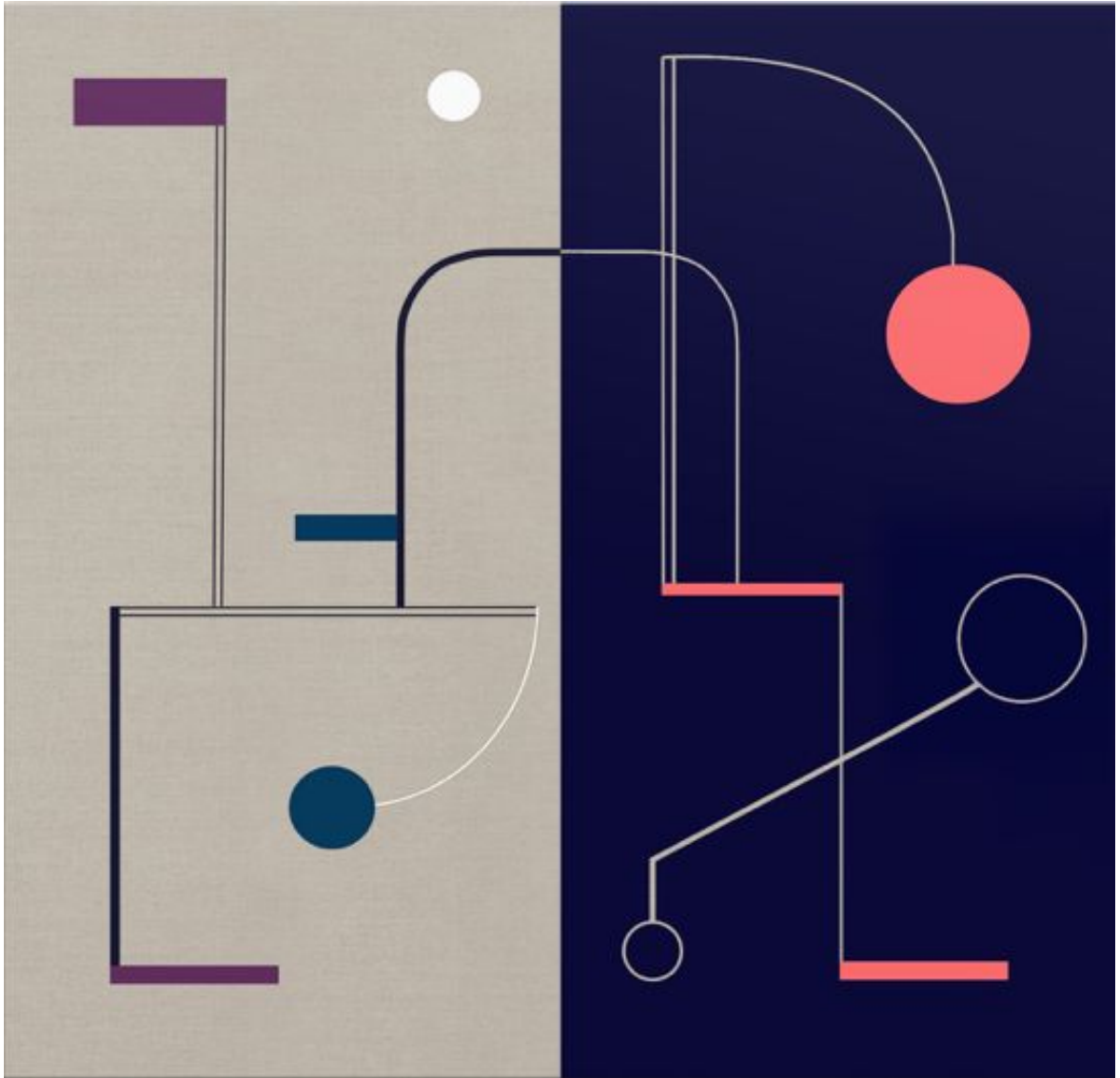
2019

40 x 40 x 40cm

Acrylic and Brass



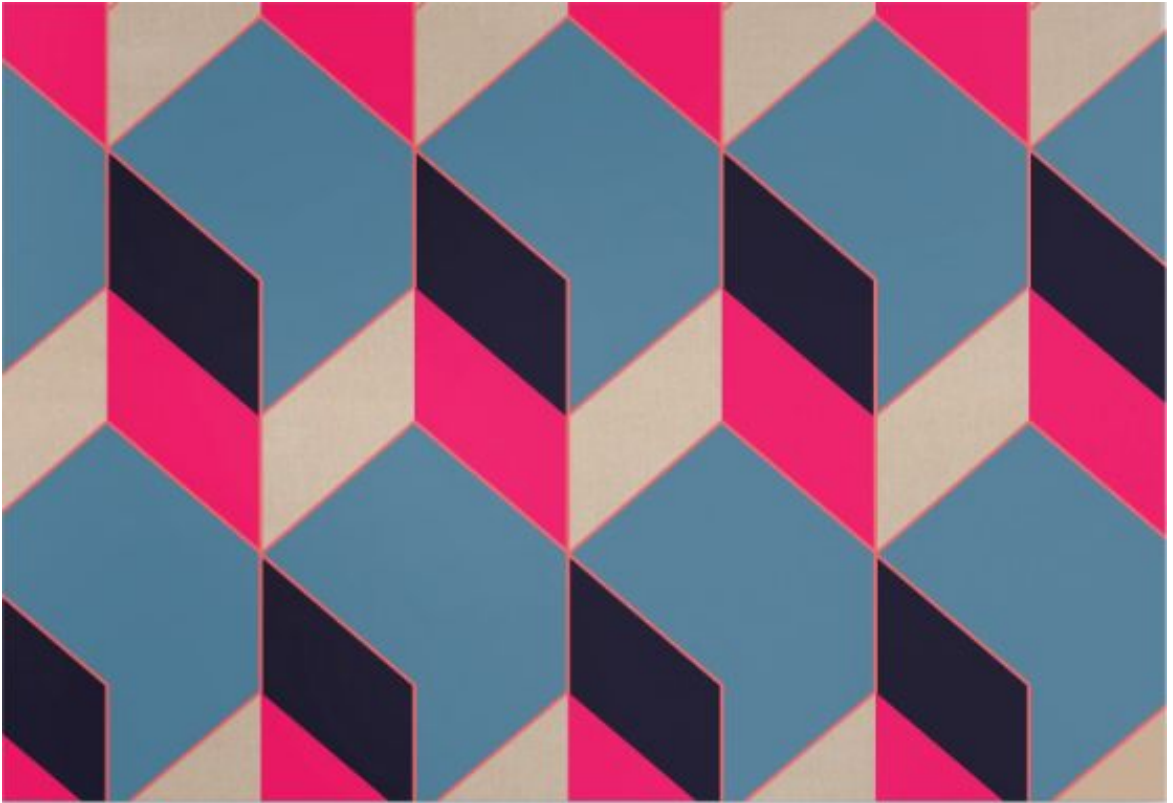
Mist  
2019  
180 x 150 cm  
Tempera on Linen



Star Clock at Night (Buckminster Fuller)  
2019  
180 x 180cm  
Tempera on Linen



A Love Making Begins You I  
2017  
150 x 150cm  
Tempera on Linen



Always Be Fond in Pink (Oscar Wilde)

2016

180 x 127cm

Tempera on Linen



Tuca Tuca a Springtime Evening in Rome

2017

180 x 130cm

Tempera on Linen





# Public Art Portfolio



## *Tirta Tawar, 2023*

*Glass, Metal, Balinese Stone, Incense, Ceramic Pot, Sand, Flowers*

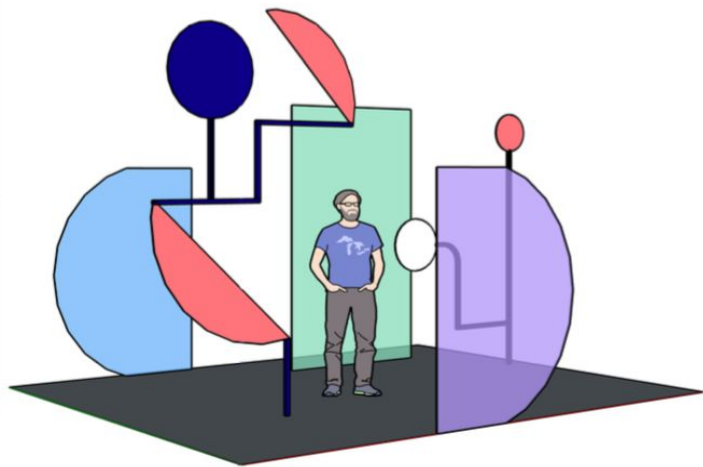
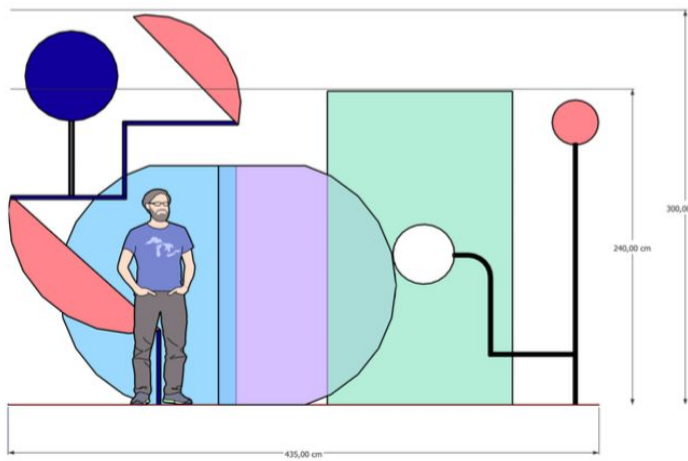
Inspired by her Balinese heritage, artist Sinta Tantra creates a sculptural installation that unifies past, present and future, offering a window to another world, a portal to another universe.

Walking around the sculpture, we see a rectangular steel frame standing proudly between two blue glass panels, overlapping like ocean tides or rivers that merge.

Incense sticks and flowers reflect the idea of abundance and joy, ritual and purpose. The Balinese black rock represents a natural order, balance, grounding our sense of self - it is also a nod to Tantra's ancestors, who came from a lineage of Balinese stone carvers. In this installation, we see all elements represented: water, earth, fire, and air.



*'Tirta Tawar'*  
2023



*'Sunset Ombre'*  
2022



*'On Being Blue'*  
2022



## *A Cosmos – Pink, Blue Black and Gold, 2021*

Accompanying her new installation "Pink Moon, Rising", Sinta Tantra has expanded motifs and elements from the mural to create a six-panel painting, "A Cosmos – Pink, Blue, Black and Gold" (2021).

Creating a dynamic sense of balance, Tantra presents a series of golden circles in a state of constant motion, as if the sun and moon were forming a perfect eclipse.

In Tantra's practice, the use of gold leaf symbolises our relationship to sublime beauty. The sense of time and space are lost within the painting, an absence of night, day, time and place. The tension of these elements creates a sense of new beginnings, possibilities, and renewal.



*'A Cosmos – Pink, Blue, Black  
and Gold'*  
*2021*



*'Pink Moon, Rising'*  
South Korea, 2020





## *Illuminated, 2021*

South Korea

Situated outside the museum entrance, the floor-based artwork occupies the silhouette of a petal, inviting visitors to interact and step onto the piece itself.

Drawing inspiration from Tantra's own heritage and identity, Temple of Flora reimagines the physical and conceptual nature of islands. Tantra writes, "I'm interested in the tropical climate of Bali and Hainan, its biodiversity, its flora and fauna and how these ideas of otherness were documented, studied, and categorised in the Victorian era."

Temple of Flora presents a matrix of balance and rhythm, reminiscent of planetary constellations, puzzle or game. Tantra emphasises the importance of individual experiences and the connections they form between these fragmented images and forms to create new readings.



# *Temple of Flora, 2021*

Ocean Flower Island Museum, China

Situated outside the museum entrance, the floor-based artwork occupies the silhouette of a petal, inviting visitors to interact and step onto the piece itself.

Drawing inspiration from Tantra's own heritage and identity, Temple of Flora reimagines the physical and conceptual nature of islands. Tantra writes, "I'm interested in the tropical climate of Bali and Hainan, its biodiversity, its flora and fauna and how these ideas of otherness were documented, studied, and categorised in the Victorian era."

Temple of Flora presents a matrix of balance and rhythm, reminiscent of planetary constellations, puzzle or game. Tantra emphasises the importance of individual experiences and the connections they form between these fragmented images and forms to create new readings.

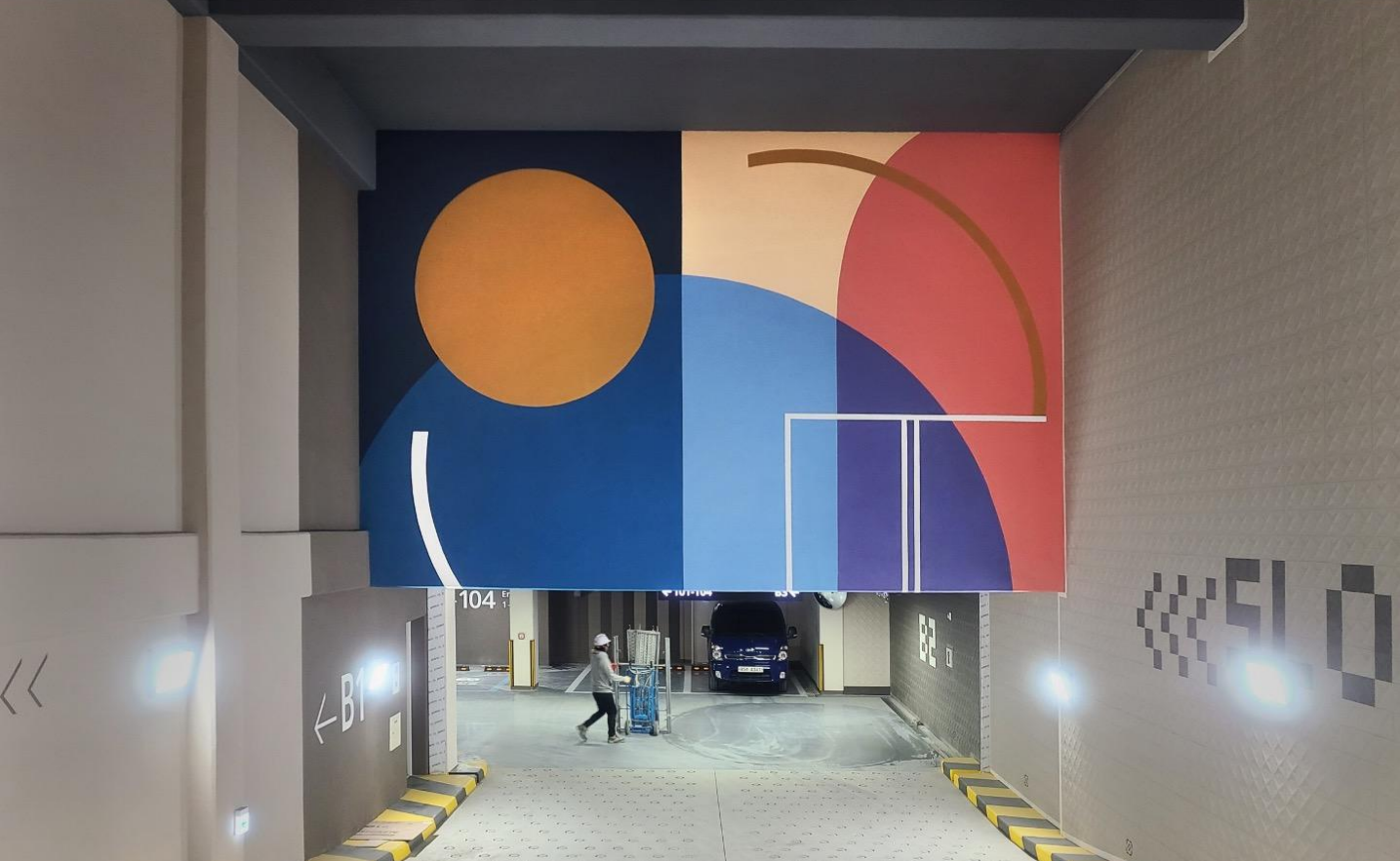


## *Crossing Mt Daemo, 2020*

Gaepo District, South Korea

In response to H Forecent's luxurious residential complex, celebrated British artist, Sinta Tantra, has created a site-specific mural which spans the architecture and surrounding environment of the Gaepo District.

The work pushes and pulls between Tantra's signature colours including pink, green, blue with earth tones inspired by Korean heritage and the site of H Forecent, invoking the nearby trees, vegetation, and forests of Gangnam. Tantra hopes that this mural can inspire and protect the residents of Seoul for future generations to come and invite us to reconnect with our natural surroundings, the park and mountain.



*'Crossing Mt. Daemo, Dawn and Wall', 2020*

Gaepo District, South Korea



# *The Grand Tour 2020*

Dulwich Picture Gallery, London

Dulwich Picture Gallery presents *The Grand Tour* (2020) a new commission and site-specific installation by London based British/Balinese artist Sinta Tantra. The work, which pays homage to the Gallery's original architect, Sir John Soane, as well as its historic collection, forms part of a fully redesigned welcome hall by Tantra, who has opened up this vital entrance space with colour, shape and light.



# *'The Grand Tour'* , 2020

Dulwich Picture Gallery, London



*Poin Square, 2020*

Jakarta, Indonesia



## *Razzle Dazzle, Dr. Share, 2020*

Floating Hospital, Indonesia

The Dazzle design concept was adopted by the UK Admiralty Marine Affairs then later by the United States Navy to make the ships a difficult target to the enemy. Razzle Dazzle, is made up of colors that symbolize the distinction of the ship's location. Blue symbolizing waves and water, while bright pink the equatorial climates the boat will pass through. Diagonal lines, mirrored rectangular shapes form a spatial void distorting the perception of the viewer while keeping a restorative sense of balance and symmetry. This unique design created by Sinta Tantra for doctorSHARE creates an uplifting focal point for the hospital's entrance.





*Razzle Dazzle, Dr Share 2020*

Dr. Share Floating Hospital, Indonesia



# *‘Horizon to Horizon’, 2020*

Al Majaz Waterfront, Sharjah UAE

This year's 22nd festival will be held under the theme of ‘Prospect’. With over 50 exhibitions on show throughout the emirate, including the Sharjah Art Museum, Al Majaz Waterfront, and Maraya Art Centre, presenting the works of local, regional and international artists.



# *Horizon to Horizon, 2020*

*Al Majaz Waterfront, Sharjah UAE*



# *‘Flight Interrupted: Eco-leaks from the Invasion Desk’, 2019*

KARACHI BIENNALE Bin Al Qasim Park, Karachi

‘Flight Interrupted: Eco-leaks from the Invasion Desk’ underscores the annihilation inflicted on eco-systems by man’s war of ambition with nature, and the myriad detrimental reactions from nature. The thematic of KB19 will take the on-going conversations a notch higher to match the urgency of the onslaught on natural habitats and natural resources. This extremity must be treated as an impetus, to cause a reaction, a comment, an alternative to a civilized, established model. An archetype that is considered by a great diversity of stakeholders as a system in crisis



*Flight Interrupted: Eco-leaks  
from the Invasion Desk, 2019*

*KARACHI BIENNALE Bin Al Qasim Park, Karachi*



## *In the Mood for Love, 2018*

*Lee Tung Avenue, Hong Kong*

Located on Lee Tung Avenue, *In the Mood for Love* is a public art commission for Hong Kong's Art Month. Working beyond the traditional walls of the gallery space, this large-scale immersive work encourages passersby to look, relook and step inside: "Circular shapes makes one feel uplifted, solid bright colours become pleasing and life-affirming." In this work, Tantra welcomes audiences to participate in a 'living painting'.

LEE TUNG AVE

利東街

*'In The Mood for Love'*

Lee Tung Avenue, Hong Kong 2018



## *Sunset at Tanah Lot*

***(8.6212°S, 115.0868°E), 2018***

*Facebook building, London*

As part of the Facebook AIR programme, *Sunset at Tanah Lot* reframes this spiral staircase both as a sculptural object in its own right, and as a symbolic place of passage and interaction. The colour palette of this piece is inspired by sunset hues at Tanah Lot beach, Bali: purples and blues of nightfall, and at the centre of the design, a single orange triangle to represent the setting sun.





## Winner design for *Palio Di*

### *Sienna's* 2017

'Drappelone' (winner flag), Siena

Each summer since the 17<sup>th</sup> century, the medieval center at the Tuscan city of Siena is taken over by the Palio Di Siena, a horse race event. The horses and riders each represent a city district and the winner is awarded a flag called 'drappelone', which is traditionally designed by a different artist each year. This year Tantra had the great honor to be the chosen artist. Her bold geometric designs and bright colors matched perfectly the aesthetics of the event, and she was wildly celebrated all over the local media.

Winner design  
for *Palio*  
*Di Siena's* 2017

'Drappelone' (winner flag), Siena





1947, 2017

The Cube building, Folkestone Triennial, Kent

Tantra's aim was 'to make the building fizz' by transforming the surfaces of its rather immobile volume. The colors she used were inspired by a poster from 1947 advertising rail travel to

Folkestone. The work of artist Sonia Delaunay inspired the circle with flowing and broken lines of color. This eclectic mixture of references fits Kent's Tontine Street, a neighborhood rich with migrants from all over the world.



**1947, 2017**

*The Cube building, Folkestone Triennial, Kent*



## *Rooftop Painting, 2017*

Hana Bank, South Korea



## *'Tasted Flight', 2017*

Playground, Seoul, South Korea



# *A Means of Liberation, 2016*

Newnham College, Cambridge University

Cambridge University's Newnham College commissioned Sinta Tantra to create an artwork and lighting scheme in one of its historic corridors. Established in 1871, Newnham College is the only undergraduate college with an all-women Fellowship. Colored geometric motifs adorn the inner walls whilst a series of hand-blown glass pendants suspend from the ceiling. The result is an artwork that becomes immersive and activated as people walk through. By incorporating the original brickwork into the installation, Tantra looks at spaces in between, layering the past with the present.



## SONGDO FLOOR PAINTING, 2015

Hailed as the 'City of the Future' and considered as 'Korea's High tech Utopia' - the city of Songdo has commissioned artist Sinta Tantra to create a spectacular floor painting as part of its major public art programme with Korean and International artists. British artists include Richards Woods and Designer Abe Rogers. Located by the waterfront, the artwork measures over 3,300 metres square.



# *Floor Painting, 2015*

City of Songdo, South Korea





# *A Beautiful Sunset Mistaken for a Dawn, 2012*

Canary Wharf, London

This impressive artwork, a 300-metre long abstract panoramic painting, is featured on both sides of the 150-metre long Bridge at Canary Wharf, London. Tantra's inspiration for the painting emerged through observations of the natural elements and the different ways people interact with the place. She recorded a 24-hour time-lapse sequence showing the sunset and sunrise over the bridge. The color palette echoes this study: blues and greys that work well during daytime and purples and pinks for the night.



*A Beautiful Sunset Mistaken for  
a Dawn, 2012*

Canary Wharf, London

# ISA Art Gallery

## CONTACT

Email: [marketing@isaartanddesign.com](mailto:marketing@isaartanddesign.com)

Telephone: (+62-21) 723-3905

WhatsApp: (+62) 811-1733-553

Jl. Wijaya Timur Raya No. 12  
Kebayoran Baru, 12170 Jakarta,  
Indonesia

Wisma 46 - Kota BNI  
Jl. Jendral Sudirman Kav. 1  
Tanah Abang, 10220  
Jakarta, Indonesia