



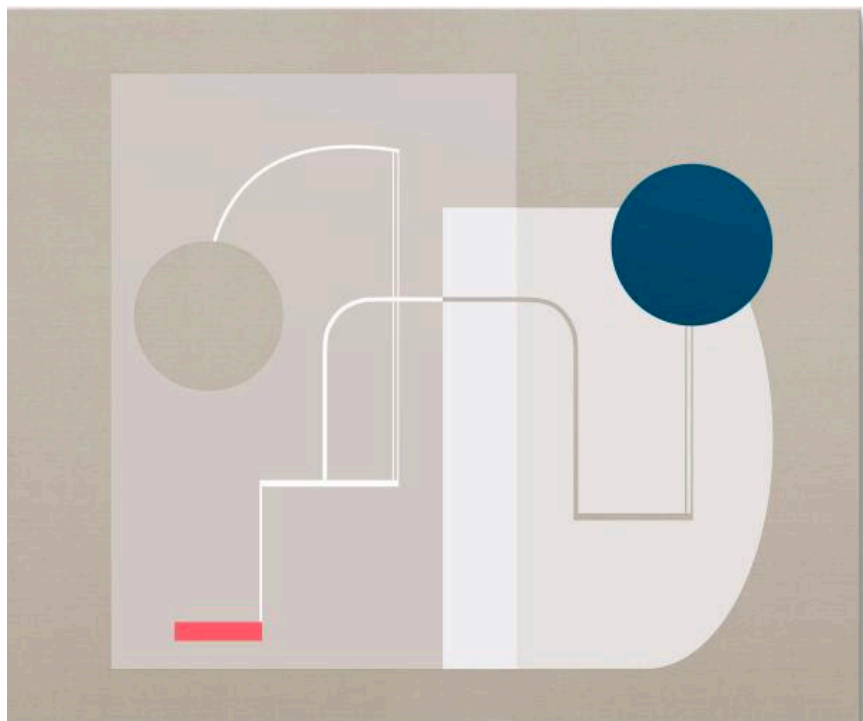
Sinta Tantra

CV/Portfolio 2020

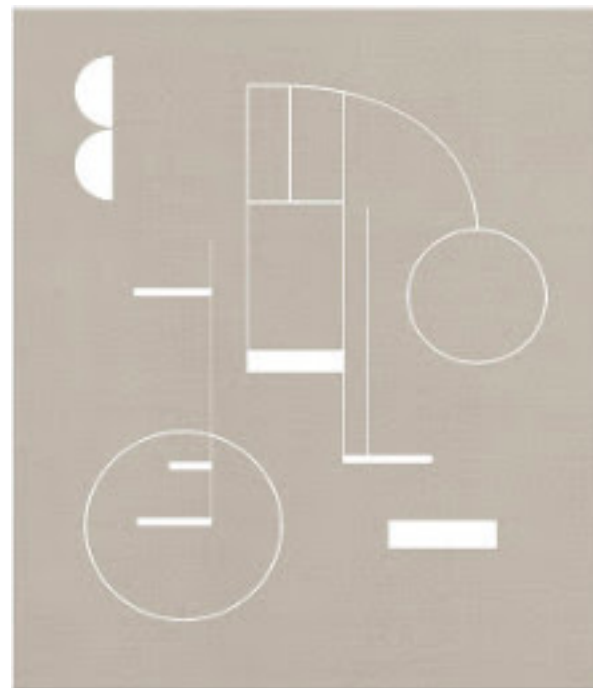
Available Works 2019



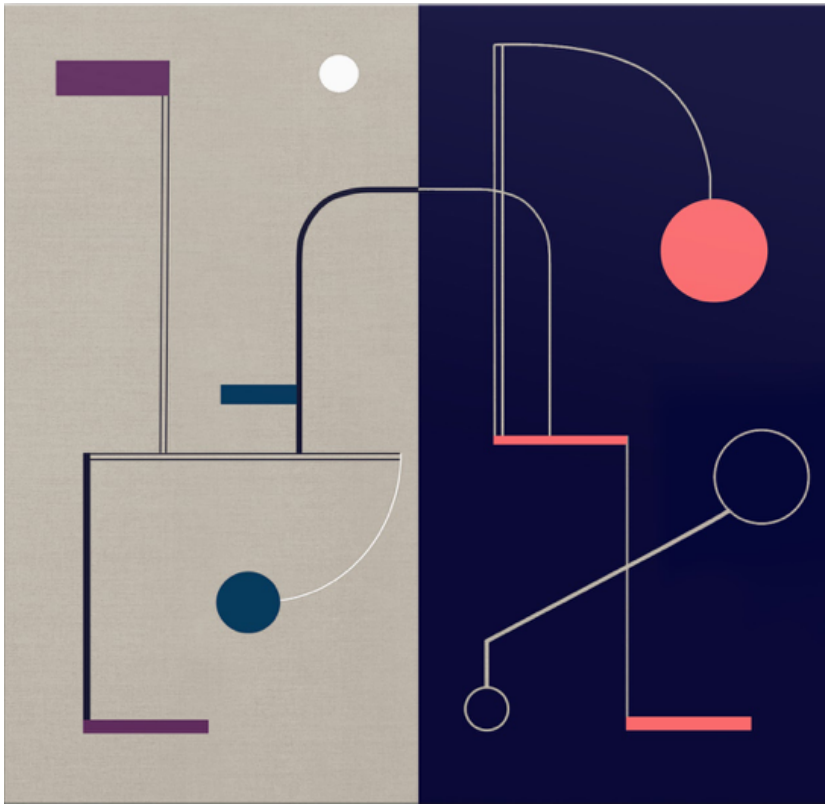
Follow Constellations and Star Paths
(Buckminster Fuller), 2019
40 x 40 x 40cm
Acrylic and Brass



Mist, 2019
180 x 150 cm
Tempera on Linen



Giapponese a Roma in Linen, 2018
120 x 100 cm
Tempera on Linen

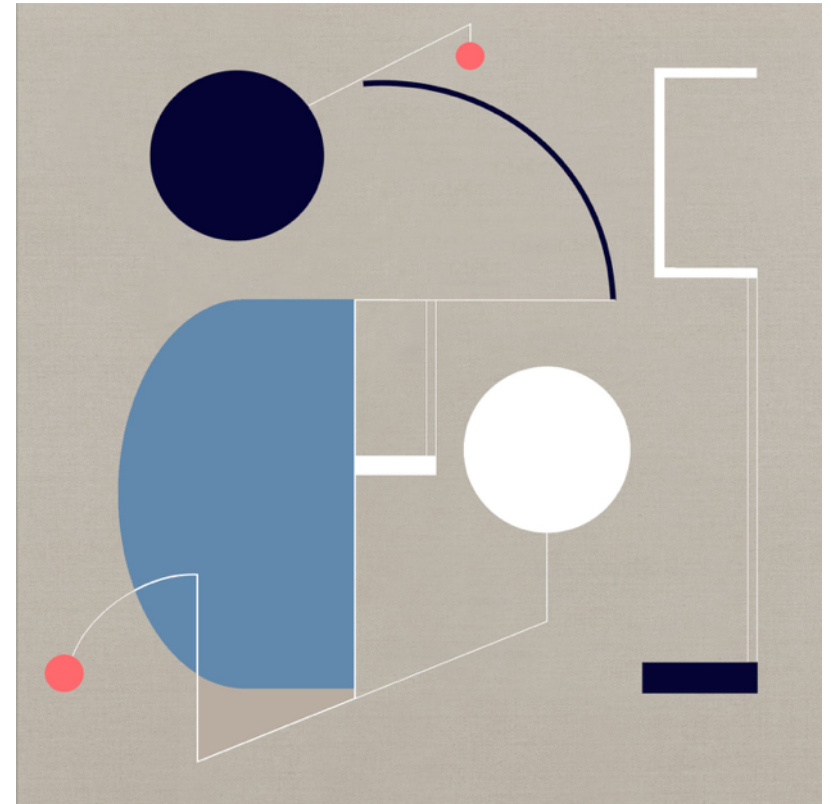


Star Clock at Night (Buckminster Fuller),

2019

180 x 180cm

Tempera on Linen



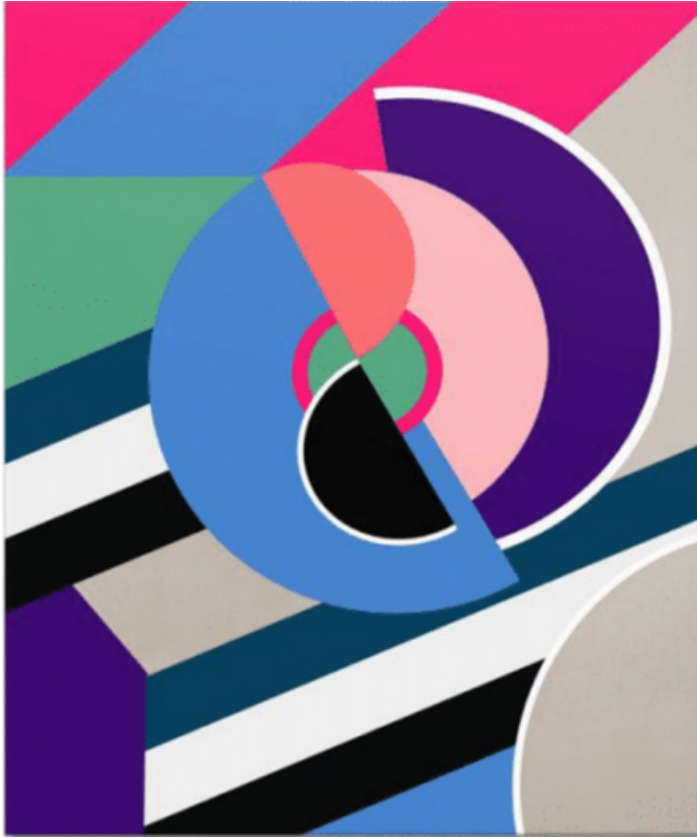
Sun Clock in Day III, 2019

180 x 180cm

Tempera on Linen



A House in Bali I (Diptych), 2018
180 x 360cm
Tempera on Linen



***A House in Bali II (Day – Sauna
Delaunay), 2018***
120 x 100cm
Tempera on Linen



A Love Making Begins You I, 2017
150 x 150cm
Tempera on Linen



Always Be Fond in Pink (Oscar Wilde), 2016

180 x 127cm

Tempera on Linen



***Tuca Tuca a Springtime Evening in
Rome, 2017***
180 x 130cm
Tempera on Linen



***Tuca Tuca a Springtime Evening
in Rome II, 2017***
100 x 100cm
Tempera on Linen



Effervescence in Pink, 2014

200 x 150 cm

Tempera on Canvas



Effervescence in Hague, 3, 2015

154 x 180 cm

Tempera on Linen

Public Art Portfolio

Flight Interrupted: Eco-leaks from the Invasion Desk, KARACHI BIENNALE Bin Al Qasim Park, Karachi, 2019

‘Flight Interrupted: Eco-leaks from the Invasion Desk’ underscores the annihilation inflicted on eco-systems by man’s war of ambition with nature, and the myriad detrimental reactions from nature. The thematic of KB19 will take the on-going conversations a notch higher to match the urgency of the onslaught on natural habitats and natural resources. This extremity must be treated as an impetus, to cause a reaction, a comment, an alternative to a civilized, established model. An archetype that is considered by a great diversity of stakeholders as a system in crisis.





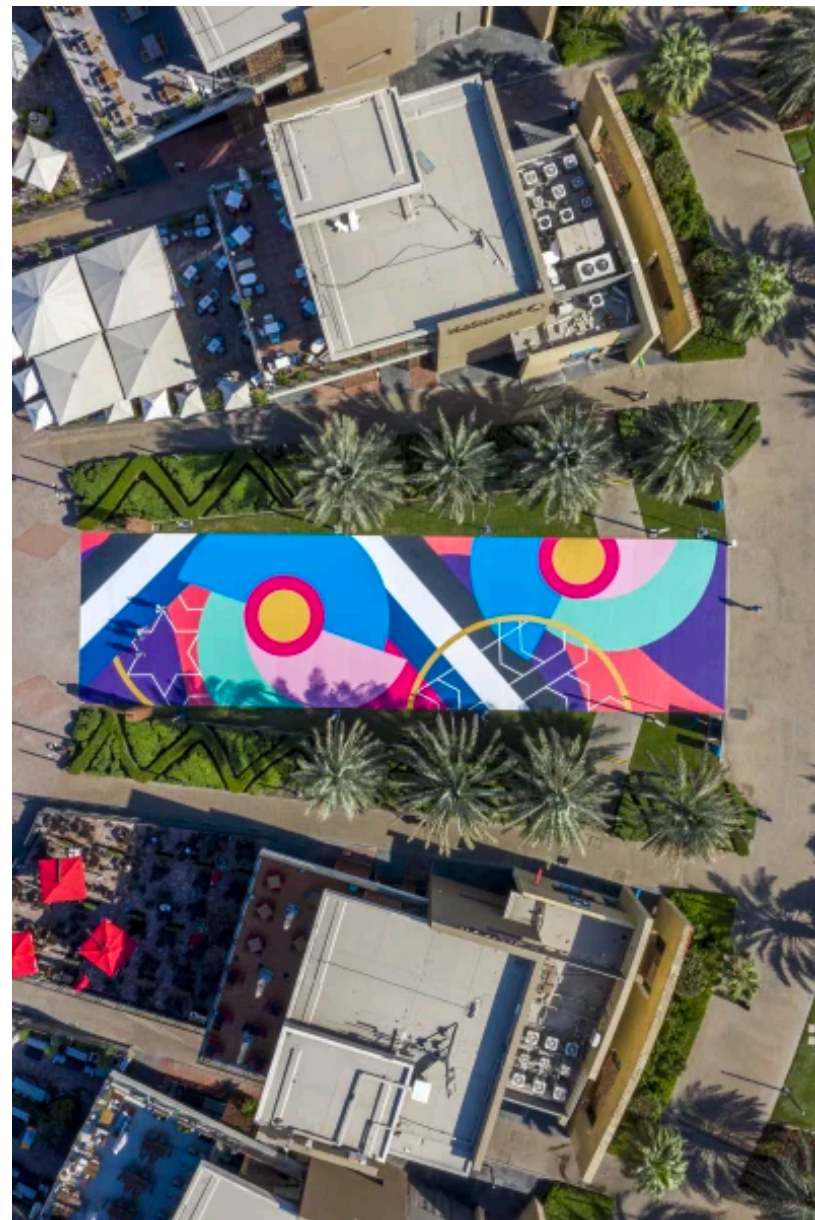
‘Flight Interrupted: Eco-leaks from the Invasion Desk’

KARACHI BIENNALE Bin Al Qasim Park

Karachi, 2019

Horizon to Horizon, Al Majaz Waterfront, Sharjah UAE, 2020

This year's 22nd festival will be held under the theme of 'Prospect'. With over 50 exhibitions on show throughout the emirate, including the Sharjah Art Museum, Al Majaz Waterfront, and Maraya Art Centre, presenting the works of local, regional and international artists.





'Horizon to Horizon'
Al Majaz Waterfront, Sharjah
UAE, 2020

***In the Mood for Love*, Lee Tung Avenue, Hong Kong, 2018**

Located on Lee Tung Avenue, *In the Mood for Love* is a public art commission for Hong Kong's Art Month. Working beyond the traditional walls of the gallery space, this large-scale immersive work encourages passersby to look, relook and step inside: "Circular shapes makes one feel uplifted, solid bright colours become pleasing and life-affirming." In this work, Tantra welcomes audiences to participate in a 'living painting'.

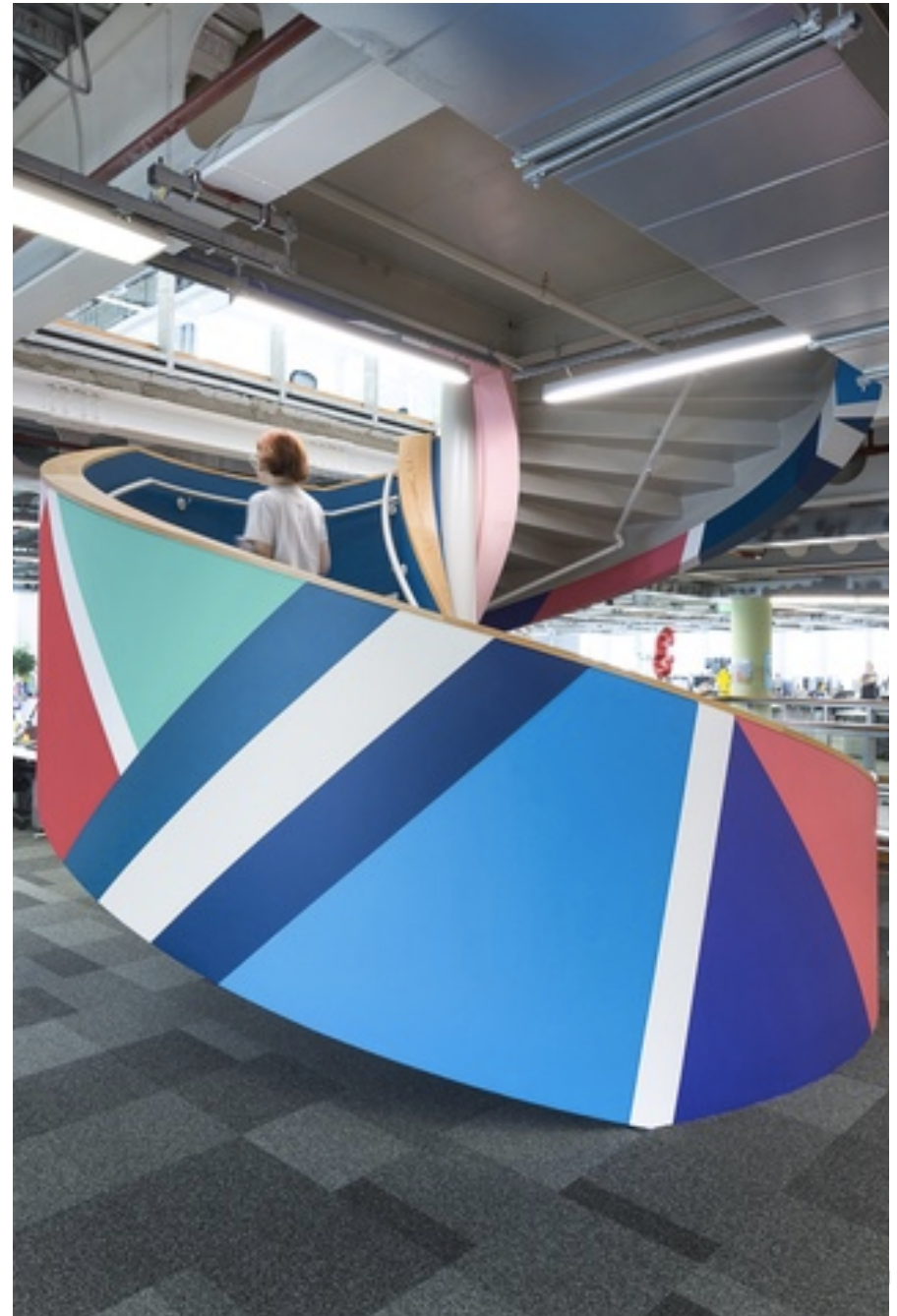




'In The Mood for Love'
Lee Tung Avenue,
Hong Kong 2018

***Sunset at Tanah Lot* (8.6212°S, 115.0868°E), Facebook building, London, 2018**

As part of the Facebook AIR programme, *Sunset at Tanah Lot* reframes this spiral staircase both as a sculptural object in its own right, and as a symbolic place of passage and interaction. The colour palette of this piece is inspired by sunset hues at Tanah Lot beach, Bali: purples and blues of nightfall, and at the centre of the design, a single orange triangle to represent the setting sun.





**'SUNSET AT TANAH LOT (8.6212° S, 115.0868° E),
FACEBOOK LONDON', 2018**
Special Comissioned Work

Winner design for *Palio Di Siena's* 'Drappellone' (winner flag), Siena, 2017

Each summer since the 17th century, the medieval center at the Tuscan city of Siena is taken over by the Palio Di Siena, a horse race event. The horses and riders each represent a city district and the winner is awarded a flag called 'drappellone', which is traditionally designed by a different artist each year. This year Tantra had the great honor to be the chosen artist. Her bold geometric designs and bright colors matched perfectly the aesthetics of the event, and she was wildly celebrated all over the local media.





PALIO, SIENA, 2017



1947, The Cube building, Folkestone Triennial, Kent, 2017

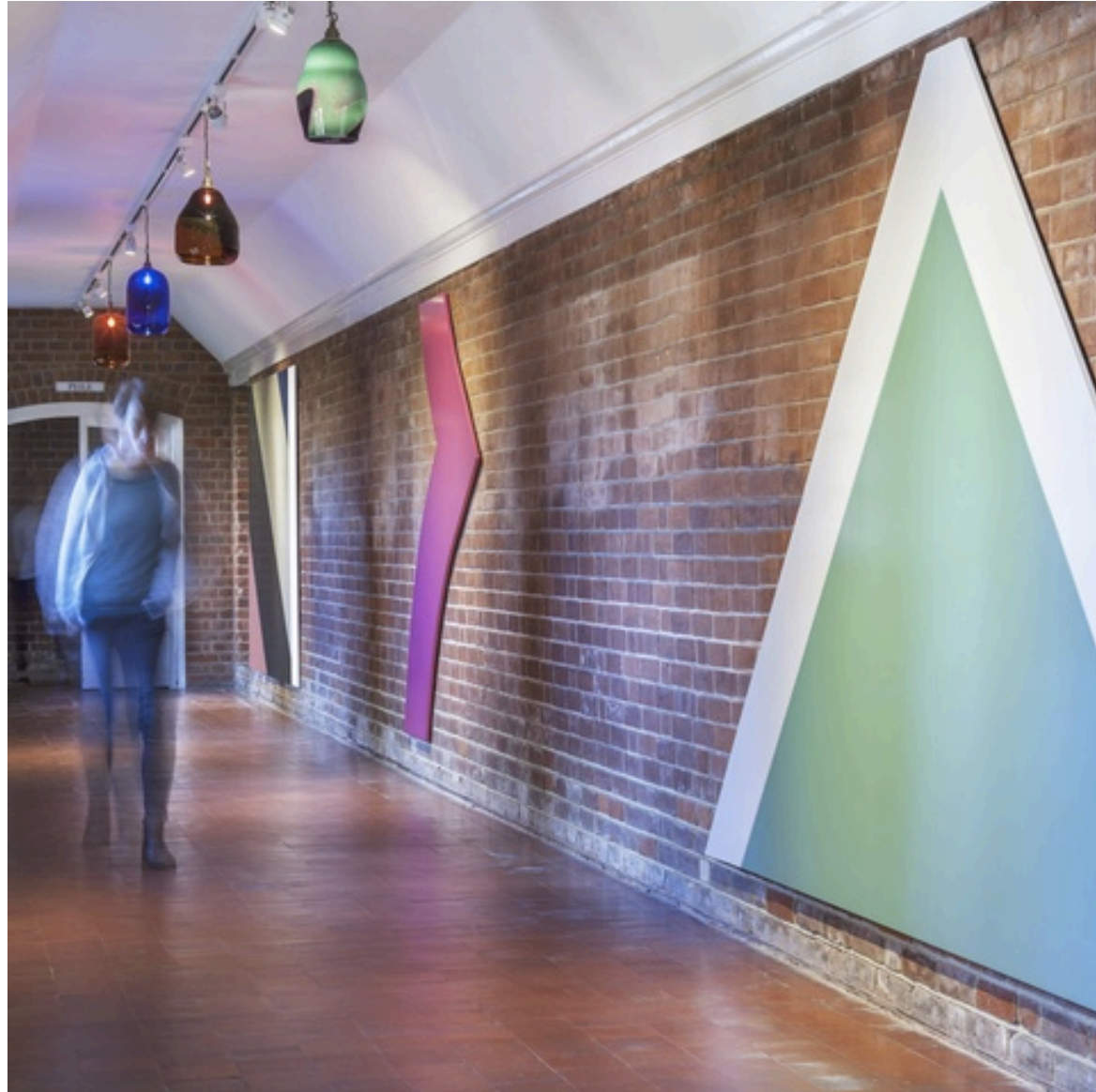
Tantra's aim was 'to make the building fizz' by transforming the surfaces of its rather immobile volume. The colors she used were inspired by a poster from 1947 advertising rail travel to Folkestone. The work of artist Sonia Delaunay inspired the circle with flowing and broken lines of color. This eclectic mixture of references fits Kent's Tontine Street, a neighborhood rich with migrants from all over the world.



**1947, The Cube building, Folkestone Triennial, Kent,
2017**

***A Means of Liberation*, Newnham College, Cambridge University, 2016**

Cambridge University's Newnham College commissioned Sinta Tantra to create an artwork and lighting scheme in one of its historic corridors. Established in 1871, Newnham College is the only undergraduate college with an all-women Fellowship. Colored geometric motifs adorn the inner walls whilst a series of hand-blown glass pendants suspend from the ceiling. The result is an artwork that becomes immersive and activated as people walk through. By incorporating the original brickwork into the installation, Tantra looks at spaces in between, layering the past with the present.





A Beautiful Sunset Mistaken for a Dawn, London, 2012

This impressive artwork, a 300-metre long abstract panoramic painting, is featured on both sides of the 150-metre long Bridge at Canary Wharf, London. Tantra's inspiration for the painting emerged through observations of the natural elements and the different ways people interact with the place. She recorded a 24-hour time-lapse sequence showing the sunset and sunrise over the bridge. The color palette echoes this study: blues and greys that work well during daytime and purples and pinks for the night.

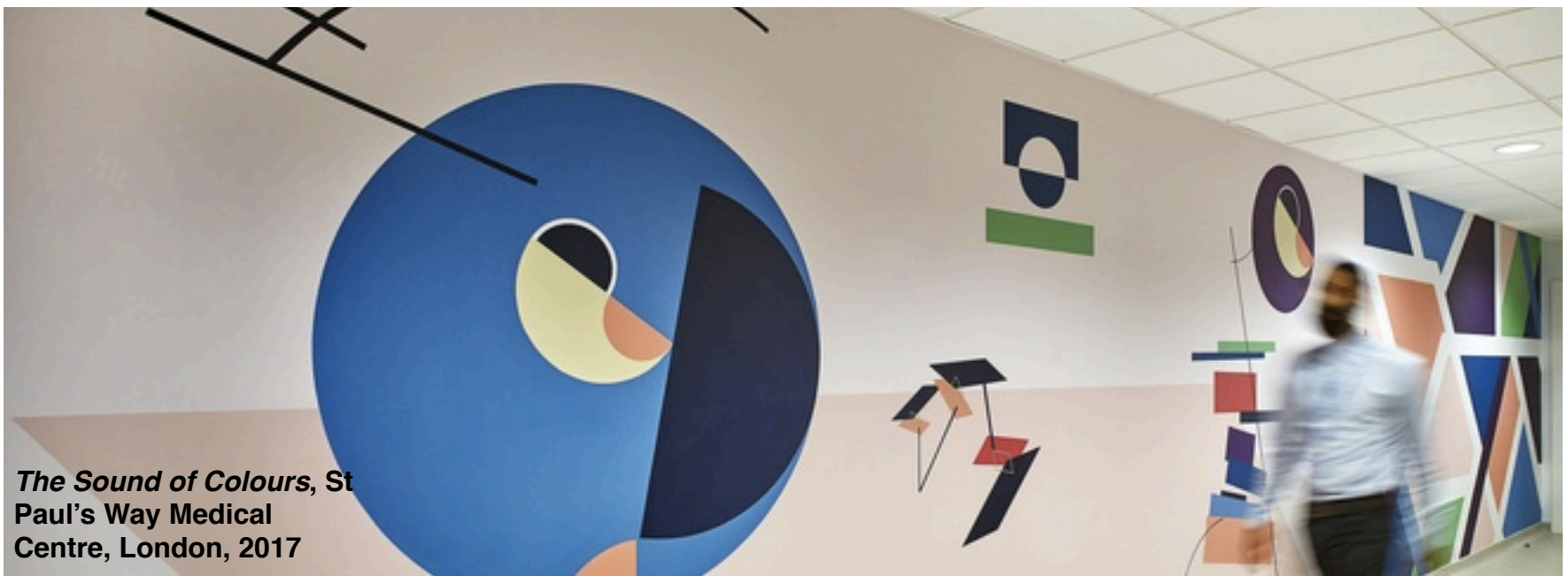


A Beautiful Sunset Mistaken for a Dawn,
Canary Wharf London, 2012

Bio

A British artist of Balinese descent, Sinta Tantra was born in New York in 1979. Known for her fascination with colour and composition, Tantra's work is an experiment in scale and dimension, a hybridity of pop and formalism, an exploration of identity and aesthetics. Her decade of work in the public realm produced distinct colour abstractions which wrapped around the built environment, enlivening and transforming them in the process. Her work now ranges from small painted canvases to huge architectural installations, from bold, tropical colour to a calder-like minimalism. It occupies a space at the intersection between painting and architecture, striking a fine balance between the two-dimensional and three-dimensional, decorative and functional, public and private. Themes within Tantra's practice include the slippage between pictorial and physical space, of turning something 'inside out', and how we as bodies become submerged in surface and structure.





The Sound of Colours, St Paul's Way Medical Centre, London, 2017

"I describe the work as 'painting on an architectural scale'. I create works that celebrate the spectacle, questioning the decorative, functional and social role of art. The compositional arrangements are rooted in formalism. I am intrigued when this formalism becomes 'relational' - when private becomes public and when the viewer becomes active. My work is an 'overlay' which inserts its identity within the pre-existing - heightening a sense of fantasy within the functional."

One of Tantra's most notable works includes a permanent landmark commission for Canary Wharf completed for the Olympics in 2012 – a 300-metre long painted bridge stretching over the water in the heart of London's business district. Other commissions in public spaces include; Royal British Society of Sculptors (2013); Liverpool Biennial (2012); Southbank Centre (2007) and Transport for London (2006). Tantra's work can be found in the collections of the UK's Government Art Collection as well as numerous private international collections.

SOLO EXHIBITIONS

2020 Modern Times, Kristin Hjellegjerde Gallery, London.
2018 *Your Private Sky*, Kristin Hjellegjerde Gallery, London
2017 *A House in Bali*, ISA Gallery, Jakarta
2016 *A Romance of Many Dimensions*, Pearl Lam Gallery, Hong Kong
2015 *Fantastic / Chromatic*, Kristin Hjellegjerde Gallery, London
2015 *Essence of a Thing*, House of St. Barnabas, London
2015 *Nick Hornby & Sinta Tantra*, Choi and Lager Gallery, Cologne
2011 *Dynamic, Maximum, Tension*, Liverpool Biennial, Liverpool
2010 *Politics of Seduction*, Stanley Picker Gallery, Kingston University, London
2010 *Arsenic Fantasy*, Gaya Fusion Gallery, Bali
2009 *Real Phoney*, Monika Bobinska Gallery, London

RECENT GROUP EXHIBITIONS

2020 On the Nature of Botanical Gardens, Framer Framed, Amsterdam
2019 Strangers in Town, Kristin Hjellegjerde Gallery, Berlin
2018, *Sinta Tantra & Haffendi Anuar*, Richard Koh Gallery, Kuala Lumpur
2018 *Hornby Tantra, Collaborative Works III*, Broadgate, London
2018 *Tetap Terang / Always Bright*, ISA, Jakarta
2018 *Voyage to Indonesia*, The World Bank, Washington DC
2017 *Empirical Atlas*, Pearl Lam Gallery, Singapore
2017 *Acts of Transgression*, Pearl Lam Gallery, Singapore
2017 *High Noon*, Accademia Belle Arti di Roma, Rome
2017 *Summer Mostra*, The British School at Rome, Rome
2017 *Identify Your Limitations, Acknowledge your Periphery*, Vitrine Gallery, Basel
2017 *Changing Perspective*, Jogja National Museum, Yogyakarta
2017 *Quotidian*, Pearl Lam Gallery, Shanghai
2017 *I Lost my Heart to a Spaceship Trooper*, Griffin Gallery, London
2017 *Spring Mostra*, The British School at Rome, Rome
2016 *Lost and Found: Place, Space and Identity*, World Trade Centre, Jakarta
2016 *Painting Now*, Riccardo Crespi Gallery, Milan

Jl. Wijaya Timur Raya No. 12

Jakarta, 12170, Indonesia

e n q u i r i e s

:

enquiries@isaartadvisory.com

phone : (6221) 723-3905

www.isaartadvisory.com

